

11 FLOOR PLANS OF RESIDENTIAL PROPERTIES IN THE PHASE 期數的住宅物業的樓面平面圖

LEGEND OF TERMS AND ABBREVIATIONS

USED ON FLOOR PLANS:

圖例：

A.C. = AIR CONDITIONER PLATFORM	= 冷氣機平台	M. BATH = MASTER BATHROOM	= 主人浴室
A.D. = AIR DUCT	= 風槽	MASTER BATH*	= 主人浴室*
AC PLATFORM FOR LMR = AIR CONDITIONER PLATFORM FOR LIFT MACHINE ROOM	= 冷氣機平台供升降機機房	M. BED RM = MASTER BEDROOM	= 主人睡房
AREA FOR AC = AREA FOR AIR CONDITIONER	= 冷氣機範圍	OPEN KIT. = OPEN KITCHEN	= 開放式廚房
BAL. = BALCONY	= 露台	OUTDOOR UNIT FOR LMR = OUTDOOR UNIT FOR LIFT MACHINE ROOM	= 室外機供升降機機房
BAL. ABOVE = BALCONY ABOVE	= 上層露台位置	P. = PASSAGE	= 通道
BATH * = BATHROOM *	= 浴室*	P.D. = PIPE DUCT	= 管道槽
BED RM * = BEDROOM *	= 睡房*	PIPE CABINET	= 管道櫃
BUILDING LINE ABOVE	= 上層建築線	PIPE COVER	= 管道蓋
COMMON AREA	= 公用地方	PIPE RM = PIPE ROOM	= 管道房
COMMON FLAT ROOF	= 公用平台	POWDER = POWDER ROOM	= 化妝間
DECK	= 甲板	PRIVATE FLAT ROOF	= 私人平台
DIN. = DINING ROOM	= 飯廳	PRIVATE ROOF OF T * UNIT *	= 第*座*單位私人天台
DN = DOWN	= 落	PUMP ROOM	= 泵房
EL. DUCT = ELECTRICAL DUCT	= 機電槽	ROOF OF STAIRHOOD	= 梯屋天台
EL RM = ELECTRICAL ROOM	= 機電房	RS&MRR = REFUSE STORAGE AND MATERIAL RECOVERY ROOM	= 垃圾及物料回收室
ELV* = EXTRA-LOW VOLTAGE*	= 特低壓電槽*	ST. = STORE ROOM	= 儲物室
ELV ROOM = EXTRA-LOW VOLTAGE ROOM	= 特低壓電房	SWIMMING POOL	= 游泳池
EMC* = ELECTRICAL METER CABINET*	= 電錶櫃*	T * = TOWER *	= 第*座
EMR * = ELECTRICAL METER ROOM	= 電錶房*	UNCOVERED AREA DESIGNATED FOR FILTRATION EQUIPMENT AND PIPES	= 無遮擋範圍供濾水設施及喉管
FAMILY = FAMILY ROOM	= 家庭廳	U.P. = UTILITY PLATFORM	= 工作平台
FAN ROOM	= 風機房	U.P. ABOVE = UTILITY PLATFORM ABOVE	= 上層工作平台位置
H.R. = HOSE REEL	= 消防喉轆	UP	= 上
JACUZZI	= 按摩池	UT. = UTILITY ROOM	= 工作間
KIT. = KITCHEN	= 廚房	UTILITY AREA	= 工作間範圍
LAV. = LAVATORY	= 洗手間	VOID	= 中空
LIFT	= 升降機	VOID ABOVE	= 上層中空位置
LIFT LOBBY	= 升降機大堂	W.M.C. = WATER METER CABINET	= 水錶櫃
LIFT MACHINE ROOM	= 升降機機房		
LIV. = LIVING ROOM	= 客廳		

11 FLOOR PLANS OF RESIDENTIAL PROPERTIES IN THE PHASE

期數的住宅物業的樓面平面圖

Remarks:

- 1 There may be architectural features and/or exposed pipes on external walls of some floors.
- 2 Common pipes exposed and/or enclosed in cladding are located at/adjacent to balcony and/or utility platform and/or flat roof and/or air conditioner platform and/or external wall of some units.
- 3 There are ceiling bulkheads or false ceiling at living room, dining room, bedroom, lavatory, bathroom, powder room, passage, store room, utility room, family room, roof of stairhood, kitchen of some units for the air-conditioning system and/or mechanical and electrical services. There are sunken slabs for mechanicals & electrical services of units above at some residential units.
- 4 The internal ceiling height within some units may vary due to structural, architectural and/or decoration design variations.
- 5 Symbols of fittings and fitments shown on the floor plans, such as bathtubs, sink, water closets, sink counter, etc., are retrieved from the latest approved building plans and are for general indication only.
- 6 There are exposed pipes mounted at part of flat roof and roof of each tower in the Phase. Only part of the exposed pipes are covered by aluminium cladding. For details, please refer to the latest approved general building plans and other relevant plans.
- 7 For some residential units, the air conditioner platform(s) outside the residential unit will be placed with outdoor air conditioner unit(s) belonging to its unit and/or other units. Such air-conditioners may emit heat and/or sounds.
- 8 Balconies and utility platforms are non-enclosed area.
- 9 During the necessary maintenance of the external walls by manager of the Phase, the gondola will be operating in the airspace outside window of residential properties and above flat roof/roof in such tower.
- 10 There are non-structural prefabricated external walls and/or curtain walls in the residential units. The Saleable Area as defined in the Formal Agreement for Sale and Purchase of a residential unit has included the non-structural prefabricated external walls and/or curtain walls and is measured from the exterior of such non-structural prefabricated external walls and/or curtain walls.
11. The dimensions of the floor plans are all structural dimensions in millimetre.

備註：

- 1 部份樓層外牆設有建築裝飾及/或外露喉管。
- 2 部份單位的露台及/或工作平台及/或平台及/或冷氣機平台及/或外牆或其鄰近地方設有外露及/或內藏於飾板的公用喉管。
- 3 部份單位客廳、飯廳、睡房、洗手間、浴室、化妝間、通道、儲物室、工作間、家庭廳、梯屋天台、廚房有裝飾橫樑或假天花、用以裝置冷氣系統及/或機電設備。部份單位天花板有跌級樓板，用以安裝樓上單位之機電設備。
- 4 部份單位之天花板高度將會因應結構、建築及/或裝修設計上的需要而有差異。
- 5 樓面平面圖上所顯示的形象裝置符號，例如浴缸、洗滌盆、坐廁、洗滌盆櫃等乃根據最新的經批准的建築圖則，只作一般性標誌。
- 6 期數內的每座大樓的平台及天台上裝設有外露喉管，只有部份外露喉管被鋁質飾板所覆蓋，詳細資料請參考最後批准之總建築圖則及其他相關圖則。
- 7 部份住宅單位外的冷氣機平台將會放置其單位及/或其他單位的一部或多部冷氣戶外機。該等冷氣機可能發出熱力及/或聲音。
- 8 露台及工作平台為不可圍封的地方。
- 9 在期數管理人員安排外牆之必要維修進行期間，吊船將在該等大樓的住宅物業之窗戶及平台/天台上之空間運作。
- 10 單位有非結構預製外牆及/或幕牆。單位之正式買賣合約所定義之實用面積之計算包括非結構預製外牆及/或幕牆，並由非結構預製外牆及/或幕牆之外圍起計。
11. 樓面平面圖之尺寸所列數字為以毫米標示之建築結構尺寸。

11 FLOOR PLANS OF RESIDENTIAL PROPERTIES IN THE PHASE 期數的住宅物業的樓面平面圖

	Tower 座數	Floor 樓層	Units 單位				
			A	B	C	D	E
The thickness of the floor slabs (excluding plaster) of each residential property (mm) 每個住宅物業的樓板 (不包括灰泥) 的厚度 (毫米)	Tower 1 (T1-A) 第1座(T1-A)	1/F 1樓	150, 200	150, 175	150, 175	150, 175	150
The floor-to-floor height (refers to the height between the top surface of the structural slab of a floor and the top surface of the structural slab of its immediate upper floor) of each residential property (mm) 每個住宅物業的層與層之間的高度 (指該樓層之石屎地台面與上一層石屎地台面之高度距離) (毫米)			3100, 3150, 3420, 3550, 3600, 3850	3100, 3150, 3500, 3550, 3600, 3850	3100, 3150, 3550, 3600, 3850	3100, 3150, 3550, 3800, 3850	3100, 3150, 3500, 3550, 3850
The thickness of the floor slabs (excluding plaster) of each residential property (mm) 每個住宅物業的樓板 (不包括灰泥) 的厚度 (毫米)	Tower 1 (T1-B) 第1座(T1-B)		150, 175	150, 175	150, 175	150	
The floor-to-floor height (refers to the height between the top surface of the structural slab of a floor and the top surface of the structural slab of its immediate upper floor) of each residential property (mm) 每個住宅物業的層與層之間的高度 (指該樓層之石屎地台面與上一層石屎地台面之高度距離) (毫米)			3150, 3500, 3550, 3600, 3800, 3850	2850, 3100, 3150, 3550, 3600, 3850	3150, 3550, 3850	3150, 3500, 3550, 3850	

The internal areas of the residential properties on the upper floors will generally be slightly larger than those on the lower floors because of the reducing thickness of the structural walls on the upper floors.

Notes:

1. The dimensions in the floor plans are all structural dimensions in millimetre.
2. 4/F, 13/F, 14/F, 24/F, 34/F, 44/F and 54/F are omitted.
3. 22/F and 50/F are refuge floors.

因住宅物業的較高樓層的結構牆的厚度遞減，較高樓層的內部面積，一般比較低樓層的內部面積稍大。
備註：

1. 樓面平面圖所列之尺寸為以毫米標示之建築結構尺寸。
2. 不設4樓、13樓、14樓、24樓、34樓、44樓及54樓。
3. 22樓及50樓為庇護層。

TOWER 1 (T1-A & T1-B) 1/F FLOOR PLAN
 第1座 (T1-A及T1-B) 1樓樓面平面圖



Scale 比例 :
 M/米 0 1 2 3 4 5



11 FLOOR PLANS OF RESIDENTIAL PROPERTIES IN THE PHASE 期數的住宅物業的樓面平面圖

	Tower 座數	Floor 樓層	Units 單位				
			A	B	C	D	E
The thickness of the floor slabs (excluding plaster) of each residential property (mm) 每個住宅物業的樓板 (不包括灰泥) 的厚度 (毫米)	Tower 1 (T1-A) 第1座(T1-A)	2/F-3/F, 5/F-12/F, 15/F-21/F	150, 175*, 200	150, 175	150, 175, 200*	150, 175	150, 175*
The floor-to-floor height (refers to the height between the top surface of the structural slab of a floor and the top surface of the structural slab of its immediate upper floor) of each residential property (mm) 每個住宅物業的層與層之間的高度 (指該樓層之石屎地台面與上一層石屎地台面之高度距離) (毫米)			3150, 3200*, 3400*, 3450*, 3580*	3150, 3200*, 3400*, 3450*, 3500*	3150, 3175*, 3200*, 3400*, 3450*	3150, 3200*, 3400*, 3450*	3150, 3200*, 3450*, 3500*
The thickness of the floor slabs (excluding plaster) of each residential property (mm) 每個住宅物業的樓板 (不包括灰泥) 的厚度 (毫米)	Tower 1 (T1-B) 第1座(T1-B)	2樓至3樓, 5樓至12樓, 15樓至21樓	150, 175	150, 175	150, 175	150	
The floor-to-floor height (refers to the height between the top surface of the structural slab of a floor and the top surface of the structural slab of its immediate upper floor) of each residential property (mm) 每個住宅物業的層與層之間的高度 (指該樓層之石屎地台面與上一層石屎地台面之高度距離) (毫米)			3150, 3200*, 3400*, 3450*, 3500*	3150, 3200*, 3400*, 3450*	3150, 3450*	3150, 3450*, 3500*	

* 21/F only 只限21樓

The internal areas of the residential properties on the upper floors will generally be slightly larger than those on the lower floors because of the reducing thickness of the structural walls on the upper floors.

Notes:

1. The dimensions in the floor plans are all structural dimensions in millimetre.
2. 4/F, 13/F, 14/F, 24/F, 34/F, 44/F and 54/F are omitted.
3. 22/F and 50/F are refuge floors.

因住宅物業的較高樓層的結構牆的厚度遞減，較高樓層的內部面積，一般比較低樓層的內部面積稍大。
備註：

1. 樓面平面圖所列之尺寸為以毫米標示之建築結構尺寸。
2. 不設4樓、13樓、14樓、24樓、34樓、44樓及54樓。
3. 22樓及50樓為庇護層。

TOWER 1 (T1-A & T1-B) 2/F-3/F, 5/F-12/F, 15/F-21/F FLOOR PLAN
 第1座 (T1-A及T1-B) 2樓至3樓, 5樓至12樓, 15樓至21樓樓面平面圖

T1-B



T1-A

Scale 比例:
 M/米 0 1 2 3 4 5



11 FLOOR PLANS OF RESIDENTIAL PROPERTIES IN THE PHASE

期數的住宅物業的樓面平面圖

	Tower 座數	Floor 樓層	Units 單位				
			A	B	C	D	E
The thickness of the floor slabs (excluding plaster) of each residential property (mm) 每個住宅物業的樓板 (不包括灰泥) 的厚度 (毫米)	Tower 1 (T1-A) 第1座(T1-A)	23/F, 25/F-32/F 23樓, 25樓至32樓	150, 200	150, 175	150, 175	150, 175	150
The floor-to-floor height (refers to the height between the top surface of the structural slab of a floor and the top surface of the structural slab of its immediate upper floor) of each residential property (mm) 每個住宅物業的層與層之間的高度 (指該樓層之石屎地台面與上一層石屎地台面之高度距離) (毫米)			3500	3500	3500	3500	3500
The thickness of the floor slabs (excluding plaster) of each residential property (mm) 每個住宅物業的樓板 (不包括灰泥) 的厚度 (毫米)	Tower 1 (T1-B) 第1座(T1-B)	23樓, 25樓至32樓	150, 175	150, 175	150, 175	150	
The floor-to-floor height (refers to the height between the top surface of the structural slab of a floor and the top surface of the structural slab of its immediate upper floor) of each residential property (mm) 每個住宅物業的層與層之間的高度 (指該樓層之石屎地台面與上一層石屎地台面之高度距離) (毫米)			3500	3500	3500	3500	

The internal areas of the residential properties on the upper floors will generally be slightly larger than those on the lower floors because of the reducing thickness of the structural walls on the upper floors.

Notes:

1. The dimensions in the floor plans are all structural dimensions in millimetre.
2. 4/F, 13/F, 14/F, 24/F, 34/F, 44/F and 54/F are omitted.
3. 22/F and 50/F are refuge floors.

因住宅物業的較高樓層的結構牆的厚度遞減，較高樓層的內部面積，一般比較低樓層的內部面積稍大。
備註：

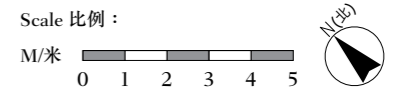
1. 樓面平面圖所列之尺寸為以毫米標示之建築結構尺寸。
2. 不設4樓、13樓、14樓、24樓、34樓、44樓及54樓。
3. 22樓及50樓為庇護層。

TOWER 1 (T1-A & T1-B) 23/F, 25/F-32/F FLOOR PLAN
 第1座 (T1-A及T1-B) 23樓, 25樓至32樓樓面平面圖

T1-B



T1-A



11 FLOOR PLANS OF RESIDENTIAL PROPERTIES IN THE PHASE 期數的住宅物業的樓面平面圖

	Tower 座數	Floor 樓層	Units 單位				
			A	B	C	D	E
The thickness of the floor slabs (excluding plaster) of each residential property (mm) 每個住宅物業的樓板 (不包括灰泥) 的厚度 (毫米)	Tower 1 (T1-A) 第1座 (T1-A)	33/F, 35/F-41/F 33樓, 35樓至41樓	150, 200	150, 175	150, 175	150, 175	150
The floor-to-floor height (refers to the height between the top surface of the structural slab of a floor and the top surface of the structural slab of its immediate upper floor) of each residential property (mm) 每個住宅物業的層與層之間的高度 (指該樓層之石屎地台面與上一層石屎地台面之高度距離) (毫米)			3500	3500	3500	3500	3500
The thickness of the floor slabs (excluding plaster) of each residential property (mm) 每個住宅物業的樓板 (不包括灰泥) 的厚度 (毫米)	Tower 1 (T1-B) 第1座 (T1-B)		150, 175	150, 175	150, 175	150	
The floor-to-floor height (refers to the height between the top surface of the structural slab of a floor and the top surface of the structural slab of its immediate upper floor) of each residential property (mm) 每個住宅物業的層與層之間的高度 (指該樓層之石屎地台面與上一層石屎地台面之高度距離) (毫米)			3500	3500	3500	3500	

The internal areas of the residential properties on the upper floors will generally be slightly larger than those on the lower floors because of the reducing thickness of the structural walls on the upper floors.

Notes:

- The dimensions in the floor plans are all structural dimensions in millimetre.
- 4/F, 13/F, 14/F, 24/F, 34/F, 44/F and 54/F are omitted.
- 22/F and 50/F are refuge floors.

因住宅物業的較高樓層的結構牆的厚度遞減，較高樓層的內部面積，一般比較低樓層的內部面積稍大。
備註：

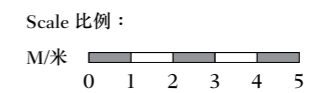
- 樓面平面圖所列之尺寸為以毫米標示之建築結構尺寸。
- 不設4樓、13樓、14樓、24樓、34樓、44樓及54樓。
- 22樓及50樓為庇護層。

TOWER 1 (T1-A & T1-B) 33/F, 35/F-41/F FLOOR PLAN
 第1座 (T1-A及T1-B) 33樓, 35樓至41樓樓面平面圖

T1-B



T1-A



11 FLOOR PLANS OF RESIDENTIAL PROPERTIES IN THE PHASE 期數的住宅物業的樓面平面圖

	Tower 座數	Floor 樓層	Units 單位				
			A	B	C	D	E
The thickness of the floor slabs (excluding plaster) of each residential property (mm) 每個住宅物業的樓板 (不包括灰泥) 的厚度 (毫米)	Tower 1 (T1-A) 第1座(T1-A)	42/F-43/F, 45/F-49/F	150, 200	150, 175	150, 175	150, 175	150, 175*
The floor-to-floor height (refers to the height between the top surface of the structural slab of a floor and the top surface of the structural slab of its immediate upper floor) of each residential property (mm) 每個住宅物業的層與層之間的高度 (指該樓層之石屎地台面與上一層石屎地台面之高度距離) (毫米)			3500, 3550*, 3750*, 3800*, 3930*	3500, 3550*, 3750*, 3800*, 3850*	3500, 3550*, 3750*, 3800*	3500, 3750*, 3800*	3500, 3550*, 3800*, 3850*, 3900*
The thickness of the floor slabs (excluding plaster) of each residential property (mm) 每個住宅物業的樓板 (不包括灰泥) 的厚度 (毫米)	Tower 1 (T1-B) 第1座(T1-B)	42樓至43樓, 45樓至49樓	150, 175	150, 175	150, 175	150	
The floor-to-floor height (refers to the height between the top surface of the structural slab of a floor and the top surface of the structural slab of its immediate upper floor) of each residential property (mm) 每個住宅物業的層與層之間的高度 (指該樓層之石屎地台面與上一層石屎地台面之高度距離) (毫米)			3500, 3550*, 3750*, 3800*, 3850*	3500, 3550*, 3750*, 3800*	3500, 3800*	3500, 3800*, 3850*	

* 49/F only 只限49樓

The internal areas of the residential properties on the upper floors will generally be slightly larger than those on the lower floors because of the reducing thickness of the structural walls on the upper floors.

Notes:

1. The dimensions in the floor plans are all structural dimensions in millimetre.
2. 4/F, 13/F, 14/F, 24/F, 34/F, 44/F and 54/F are omitted.
3. 22/F and 50/F are refuge floors.

因住宅物業的較高樓層的結構牆的厚度遞減，較高樓層的內部面積，一般比較低樓層的內部面積稍大。
備註：

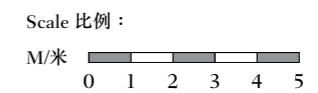
1. 樓面平面圖所列之尺寸為以毫米標示之建築結構尺寸。
2. 不設4樓、13樓、14樓、24樓、34樓、44樓及54樓。
3. 22樓及50樓為庇護層。

TOWER 1 (T1-A & T1-B) 42/F-43/F, 45/F-49/F FLOOR PLAN
 第1座 (T1-A及T1-B) 42樓至43樓, 45樓至49樓樓面平面圖

T1-B



T1-A



11 FLOOR PLANS OF RESIDENTIAL PROPERTIES IN THE PHASE

期數的住宅物業的樓面平面圖

	Tower 座數	Floor 樓層	Units 單位	
			A	B
The thickness of the floor slabs (excluding plaster) of each residential property (mm) 每個住宅物業的樓板 (不包括灰泥) 的厚度 (毫米)	Tower 1 (T1-A) 第1座(T1-A)	51/F 51樓	150, 175, 200	150, 175, 200
The floor-to-floor height (refers to the height between the top surface of the structural slab of a floor and the top surface of the structural slab of its immediate upper floor) of each residential property (mm) 每個住宅物業的層與層之間的高度 (指該樓層之石屎地台面與上一層石屎地台面之高度距離) (毫米)			3100, 3450, 3500, 3800, 3900	3100, 3150, 3200, 3500, 3850, 3950
The thickness of the floor slabs (excluding plaster) of each residential property (mm) 每個住宅物業的樓板 (不包括灰泥) 的厚度 (毫米)	Tower 1 (T1-B) 第1座(T1-B)		150, 175	150, 200
The floor-to-floor height (refers to the height between the top surface of the structural slab of a floor and the top surface of the structural slab of its immediate upper floor) of each residential property (mm) 每個住宅物業的層與層之間的高度 (指該樓層之石屎地台面與上一層石屎地台面之高度距離) (毫米)			3150, 3200, 3500, 3800	3125, 3500, 3850, 3875

The internal areas of the residential properties on the upper floors will generally be slightly larger than those on the lower floors because of the reducing thickness of the structural walls on the upper floors.

Notes:

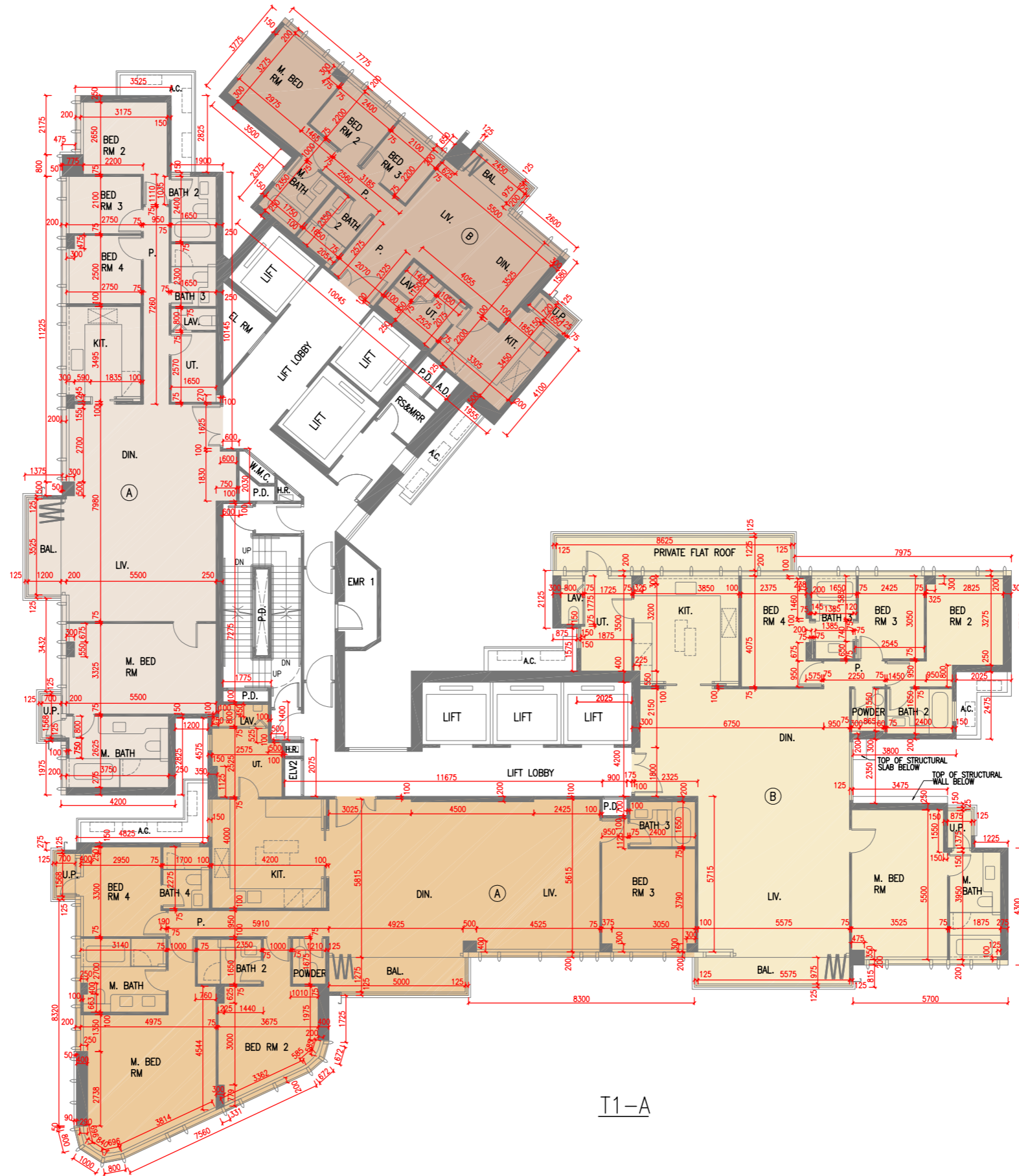
1. The dimensions in the floor plans are all structural dimensions in millimetre.
2. 4/F, 13/F, 14/F, 24/F, 34/F, 44/F and 54/F are omitted.
3. 22/F and 50/F are refuge floors.

因住宅物業的較高樓層的結構牆的厚度遞減，較高樓層的內部面積，一般比較低樓層的內部面積稍大。
備註：

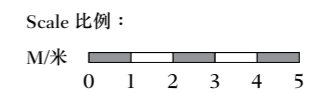
1. 樓面平面圖所列之尺寸為以毫米標示之建築結構尺寸。
2. 不設4樓、13樓、14樓、24樓、34樓、44樓及54樓。
3. 22樓及50樓為庇護層。

TOWER 1 (T1-A & T1-B) 51/F FLOOR PLAN
 第1座 (T1-A及T1-B) 51樓樓面平面圖

T1-B



T1-A



11 FLOOR PLANS OF RESIDENTIAL PROPERTIES IN THE PHASE 期數的住宅物業的樓面平面圖

	Tower 座數	Floor 樓層	Units 單位	
			A	B
The thickness of the floor slabs (excluding plaster) of each residential property (mm) 每個住宅物業的樓板 (不包括灰泥) 的厚度 (毫米)	Tower 1 (T1-A) 第1座(T1-A)	52/F 52樓	150, 175, 200	150, 175, 200
The floor-to-floor height (refers to the height between the top surface of the structural slab of a floor and the top surface of the structural slab of its immediate upper floor) of each residential property (mm) 每個住宅物業的層與層之間的高度 (指該樓層之石屎地台面與上一層石屎地台面之高度距離) (毫米)			3050, 3100, 3150, 3200, 3450, 3500, 3550, 3600, 3800, 3850, 3875, 3900, 3950, 4000	3000, 3050, 3100, 3450, 3500, 3550, 3600
The thickness of the floor slabs (excluding plaster) of each residential property (mm) 每個住宅物業的樓板 (不包括灰泥) 的厚度 (毫米)	Tower 1 (T1-B) 第1座(T1-B)		150, 175	150, 200
The floor-to-floor height (refers to the height between the top surface of the structural slab of a floor and the top surface of the structural slab of its immediate upper floor) of each residential property (mm) 每個住宅物業的層與層之間的高度 (指該樓層之石屎地台面與上一層石屎地台面之高度距離) (毫米)			3000, 3050, 3100, 3150, 3450, 3500, 3550, 3800, 3850, 3900, 3950, 4000	3100, 3150, 3200, 3450, 3475, 3500, 3525, 3550, 3800, 3850, 3875

The internal areas of the residential properties on the upper floors will generally be slightly larger than those on the lower floors because of the reducing thickness of the structural walls on the upper floors.

Notes:

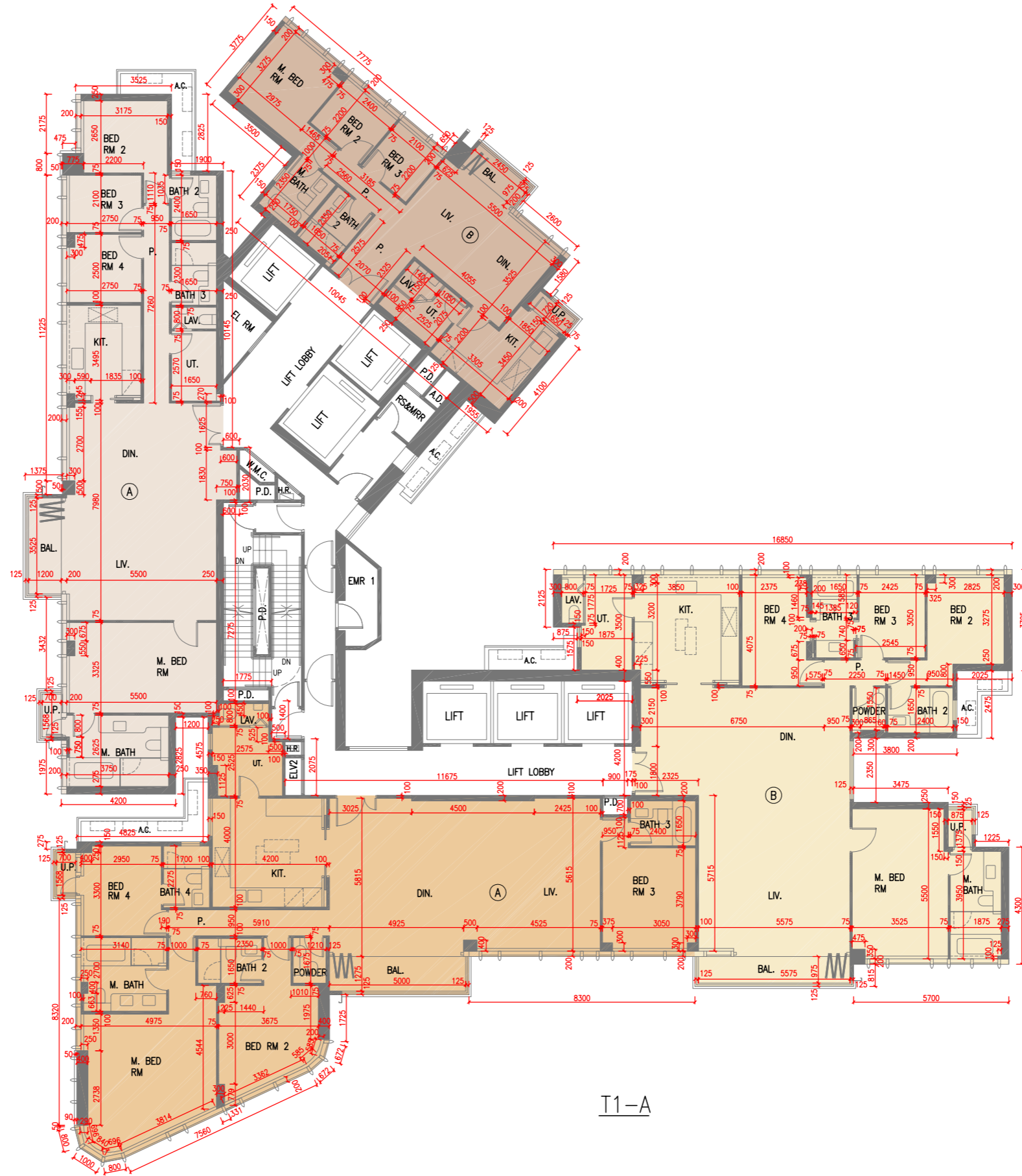
- The dimensions in the floor plans are all structural dimensions in millimetre.
- 4/F, 13/F, 14/F, 24/F, 34/F, 44/F and 54/F are omitted.
- 22/F and 50/F are refuge floors.

因住宅物業的較高樓層的結構牆的厚度遞減，較高樓層的內部面積，一般比較低樓層的內部面積稍大。
備註：

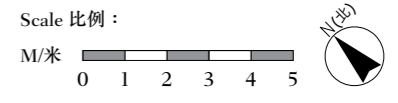
- 樓面平面圖所列之尺寸為以毫米標示之建築結構尺寸。
- 不設4樓、13樓、14樓、24樓、34樓、44樓及54樓。
- 22樓及50樓為庇護層。

TOWER 1 (T1-A & T1-B) 52/F FLOOR PLAN
 第1座 (T1-A及T1-B) 52樓樓面平面圖

T1-B



T1-A



11 FLOOR PLANS OF RESIDENTIAL PROPERTIES IN THE PHASE

期數的住宅物業的樓面平面圖

	Tower 座數	Floor 樓層	Units 單位	
			A	B
The thickness of the floor slabs (excluding plaster) of each residential property (mm) 每個住宅物業的樓板 (不包括灰泥) 的厚度 (毫米)	Tower 1 (T1-A) 第1座(T1-A)	53/F 53樓	150, 175, 200, 500	150, 175, 200
The floor-to-floor height (refers to the height between the top surface of the structural slab of a floor and the top surface of the structural slab of its immediate upper floor) of each residential property (mm) 每個住宅物業的層與層之間的高度 (指該樓層之石屎地台面與上一層石屎地台面之高度距離) (毫米)			3500, 3550, 3800, 3850, 3900, 3950, 7000	3500, 3550, 3850, 3900, 3950, 4000
The thickness of the floor slabs (excluding plaster) of each residential property (mm) 每個住宅物業的樓板 (不包括灰泥) 的厚度 (毫米)	Tower 1 (T1-B) 第1座(T1-B)		150, 175, 200	150, 200
The floor-to-floor height (refers to the height between the top surface of the structural slab of a floor and the top surface of the structural slab of its immediate upper floor) of each residential property (mm) 每個住宅物業的層與層之間的高度 (指該樓層之石屎地台面與上一層石屎地台面之高度距離) (毫米)			3500, 3550, 3850, 3900, 3950, 4000	3200, 3500, 3550, 3800, 3850, 3900

The internal areas of the residential properties on the upper floors will generally be slightly larger than those on the lower floors because of the reducing thickness of the structural walls on the upper floors.

Notes:

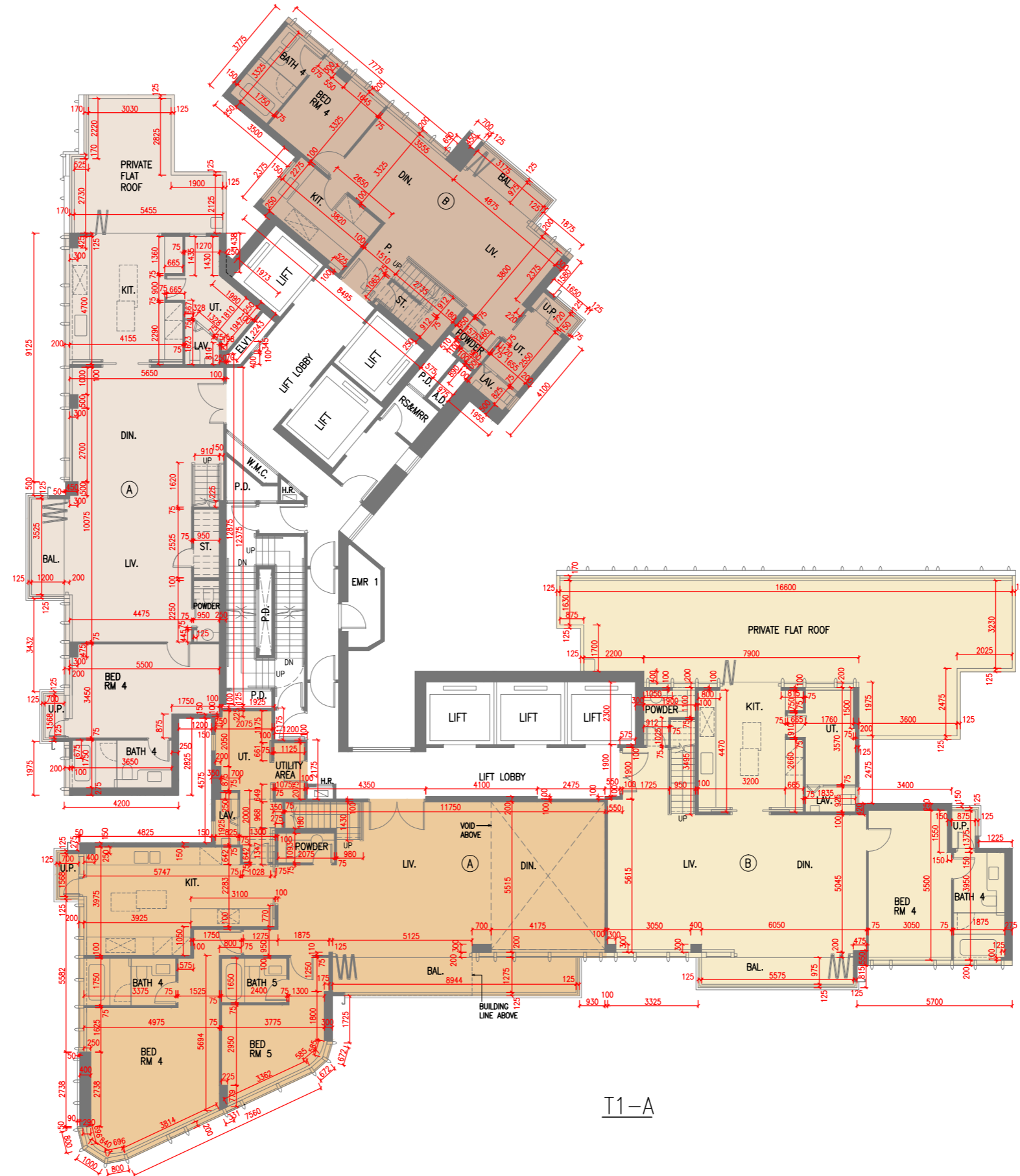
- The dimensions in the floor plans are all structural dimensions in millimetre.
- 4/F, 13/F, 14/F, 24/F, 34/F, 44/F and 54/F are omitted.
- 22/F and 50/F are refuge floors.

因住宅物業的較高樓層的結構牆的厚度遞減，較高樓層的內部面積，一般比較低樓層的內部面積稍大。
備註：

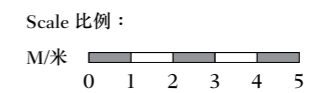
- 樓面平面圖所列之尺寸為以毫米標示之建築結構尺寸。
- 不設4樓、13樓、14樓、24樓、34樓、44樓及54樓。
- 22樓及50樓為庇護層。

TOWER 1 (T1-A & T1-B) 53/F FLOOR PLAN
 第1座 (T1-A及T1-B) 53樓樓面平面圖

T1-B



T1-A



11 FLOOR PLANS OF RESIDENTIAL PROPERTIES IN THE PHASE 期數的住宅物業的樓面平面圖

	Tower 座數	Floor 樓層	Units 單位	
			A	B
The thickness of the floor slabs (excluding plaster) of each residential property (mm) 每個住宅物業的樓板 (不包括灰泥) 的厚度 (毫米)	Tower 1 (T1-A) 第1座(T1-A)	55/F 55樓	150, 200, 250	150, 200, 300
The floor-to-floor height (refers to the height between the top surface of the structural slab of a floor and the top surface of the structural slab of its immediate upper floor) of each residential property (mm) 每個住宅物業的層與層之間的高度 (指該樓層之石屎地台面與上一層石屎地台面之高度距離) (毫米)			3500	3250, 3500
The thickness of the floor slabs (excluding plaster) of each residential property (mm) 每個住宅物業的樓板 (不包括灰泥) 的厚度 (毫米)	Tower 1 (T1-B) 第1座(T1-B)		150, 200, 300	150, 200, 300
The floor-to-floor height (refers to the height between the top surface of the structural slab of a floor and the top surface of the structural slab of its immediate upper floor) of each residential property (mm) 每個住宅物業的層與層之間的高度 (指該樓層之石屎地台面與上一層石屎地台面之高度距離) (毫米)			3250, 3500	3250, 3500

The internal areas of the residential properties on the upper floors will generally be slightly larger than those on the lower floors because of the reducing thickness of the structural walls on the upper floors.

Notes:

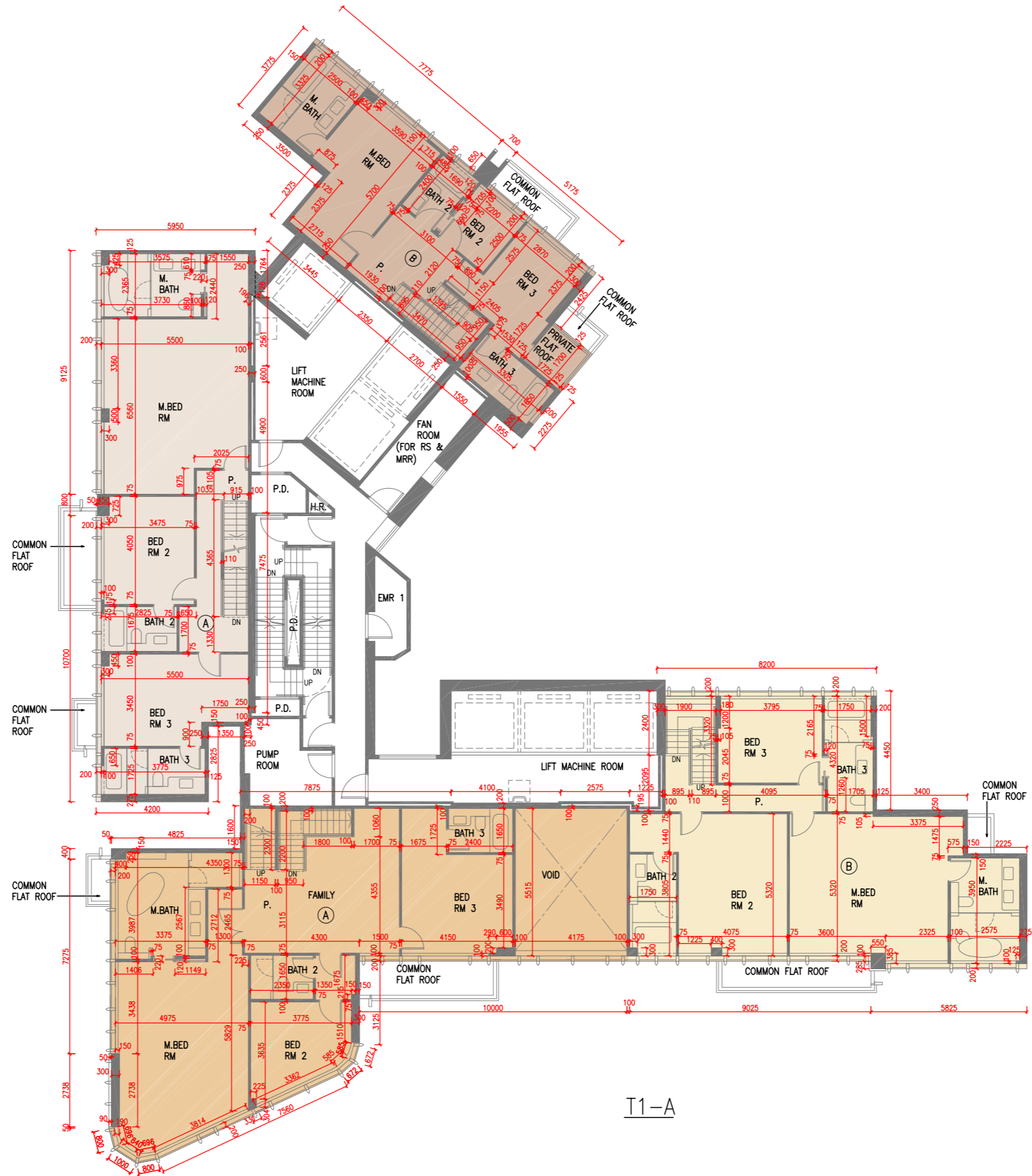
1. The dimensions in the floor plans are all structural dimensions in millimetre.
2. 4/F, 13/F, 14/F, 24/F, 34/F, 44/F and 54/F are omitted.
3. 22/F and 50/F are refuge floors.

因住宅物業的較高樓層的結構牆的厚度遞減，較高樓層的內部面積，一般比較低樓層的內部面積稍大。
備註：

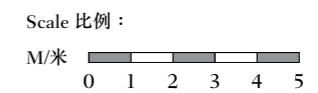
1. 樓面平面圖所列之尺寸為以毫米標示之建築結構尺寸。
2. 不設4樓、13樓、14樓、24樓、34樓、44樓及54樓。
3. 22樓及50樓為庇護層。

TOWER 1 (T1-A & T1-B) 55/F FLOOR PLAN
 第1座 (T1-A及T1-B) 55樓樓面平面圖

T1-B



T1-A



11 FLOOR PLANS OF RESIDENTIAL PROPERTIES IN THE PHASE 期數的住宅物業的樓面平面圖

	Tower 座數	Floor 樓層	Units 單位	
			A	B
The thickness of the floor slabs (excluding plaster) of each residential property (mm) 每個住宅物業的樓板 (不包括灰泥) 的厚度 (毫米)	Tower 1 (T1-A) 第1座 (T1-A)	Roof 天台	N/A 不適用	N/A 不適用
The floor-to-floor height (refers to the height between the top surface of the structural slab of a floor and the top surface of the structural slab of its immediate upper floor) of each residential property (mm) 每個住宅物業的層與層之間的高度 (指該樓層之石屎地台面與上一層石屎地台面之高度距離) (毫米)			N/A 不適用	N/A 不適用
The thickness of the floor slabs (excluding plaster) of each residential property (mm) 每個住宅物業的樓板 (不包括灰泥) 的厚度 (毫米)	Tower 1 (T1-B) 第1座 (T1-B)		N/A 不適用	N/A 不適用
The floor-to-floor height (refers to the height between the top surface of the structural slab of a floor and the top surface of the structural slab of its immediate upper floor) of each residential property (mm) 每個住宅物業的層與層之間的高度 (指該樓層之石屎地台面與上一層石屎地台面之高度距離) (毫米)			N/A 不適用	N/A 不適用

The internal areas of the residential properties on the upper floors will generally be slightly larger than those on the lower floors because of the reducing thickness of the structural walls on the upper floors.

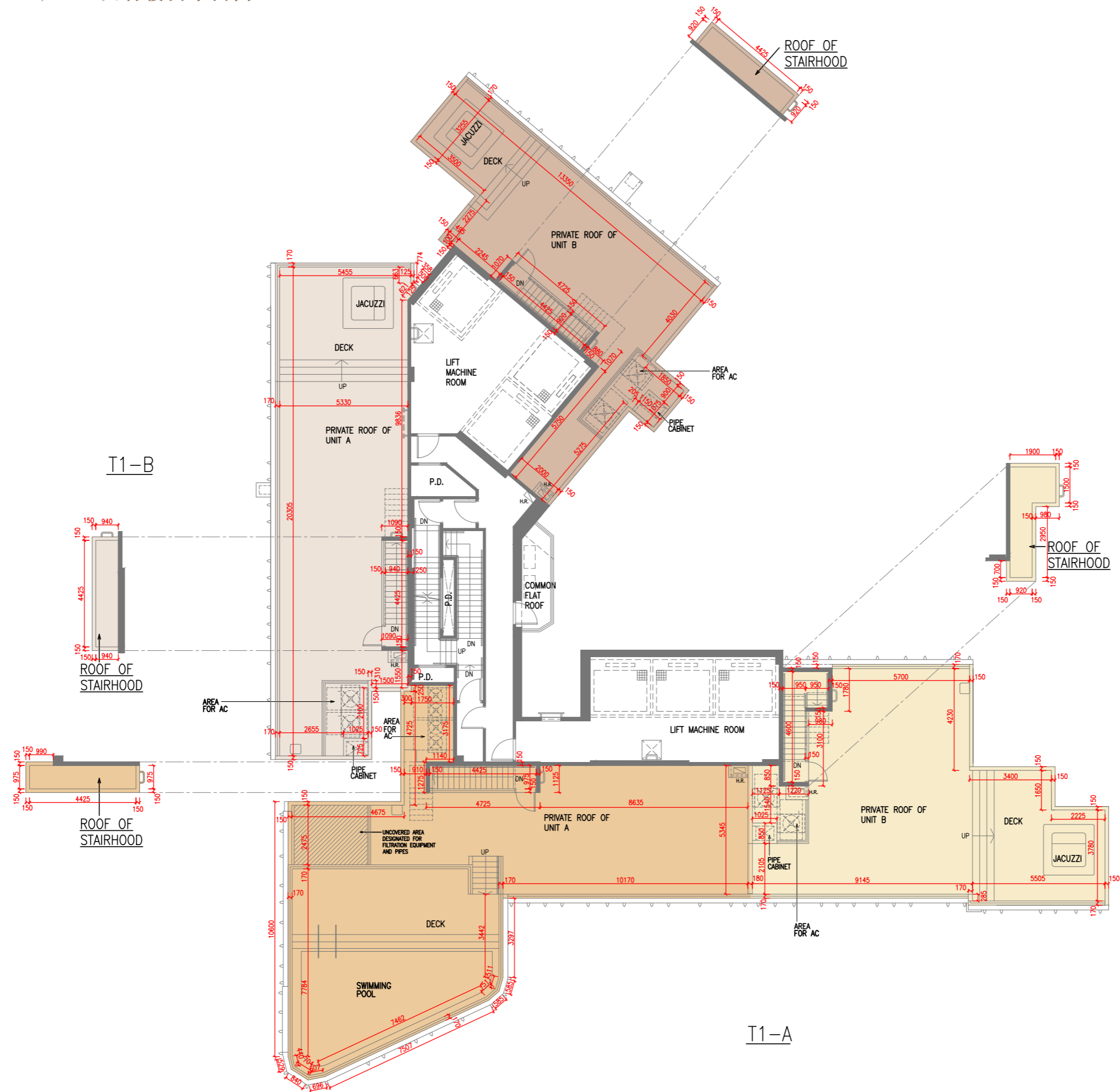
Notes:

- The dimensions in the floor plans are all structural dimensions in millimetre.
- 4/F, 13/F, 14/F, 24/F, 34/F, 44/F and 54/F are omitted.
- 22/F and 50/F are refuge floors.

因住宅物業的較高樓層的結構牆的厚度遞減，較高樓層的內部面積，一般比較低樓層的內部面積稍大。
備註：

- 樓面平面圖所列之尺寸為以毫米標示之建築結構尺寸。
- 不設4樓、13樓、14樓、24樓、34樓、44樓及54樓。
- 22樓及50樓為庇護層。

TOWER 1 (T1-A & T1-B) ROOF FLOOR PLAN
 第1座 (T1-A及T1-B) 天台樓面平面圖



Scale 比例：
 M/米 0 1 2 3 4 5

11 FLOOR PLANS OF RESIDENTIAL PROPERTIES IN THE PHASE 期數的住宅物業的樓面平面圖

	Tower 座數	Floor 樓層	Units 單位					
			A	B	C	D	E	F
The thickness of the floor slabs (excluding plaster) of each residential property (mm) 每個住宅物業的樓板 (不包括灰泥) 的厚度 (毫米)	Tower 2 (T2-A) 第2座 (T2-A)	1/F 1樓	150, 200	150, 175	150, 200	150, 200	150, 175	
The floor-to-floor height (refers to the height between the top surface of the structural slab of a floor and the top surface of the structural slab of its immediate upper floor) of each residential property (mm) 每個住宅物業的層與層之間的高度 (指該樓層之石屎地台面與上一層石屎地台面之高度距離) (毫米)			2800, 2850, 2900, 3100, 3150, 3500, 3550, 3600, 3850	3100, 3150, 3500, 3550, 3600, 3850	2800, 3100, 3150, 3500, 3550, 3600, 3800, 3850	3100, 3150, 3550, 3600, 3850	2850, 3100, 3150, 3500, 3550, 3850	
The thickness of the floor slabs (excluding plaster) of each residential property (mm) 每個住宅物業的樓板 (不包括灰泥) 的厚度 (毫米)	Tower 2 (T2-B) 第2座 (T2-B)		150	150	150	150	150	150
The floor-to-floor height (refers to the height between the top surface of the structural slab of a floor and the top surface of the structural slab of its immediate upper floor) of each residential property (mm) 每個住宅物業的層與層之間的高度 (指該樓層之石屎地台面與上一層石屎地台面之高度距離) (毫米)			2900, 3100, 3150, 3550, 3600, 3850	3100, 3150, 3500, 3550, 3850	2800, 3150, 3500, 3850	3150, 3500, 3850	3150, 3500, 3850	3150, 3600, 3850

The internal areas of the residential properties on the upper floors will generally be slightly larger than those on the lower floors because of the reducing thickness of the structural walls on the upper floors.

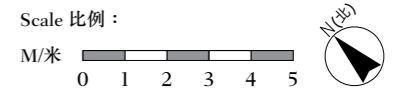
Notes:

1. The dimensions in the floor plans are all structural dimensions in millimetre.
2. 4/F, 13/F, 14/F, 24/F, 34/F, 44/F and 54/F are omitted.
3. 22/F and 51/F are refuge floors.

因住宅物業的較高樓層的結構牆的厚度遞減，較高樓層的內部面積，一般比較低樓層的內部面積稍大。
備註：

1. 樓面平面圖所列之尺寸為以毫米標示之建築結構尺寸。
2. 不設4樓、13樓、14樓、24樓、34樓、44樓及54樓。
3. 22樓及51樓為庇護層。

TOWER 2 (T2-A & T2-B) 1/F FLOOR PLAN
 第2座 (T2-A及T2-B) 1樓樓面平面圖



11 FLOOR PLANS OF RESIDENTIAL PROPERTIES IN THE PHASE 期數的住宅物業的樓面平面圖

	Tower 座數	Floor 樓層	Units 單位					
			A	B	C	D	E	F
The thickness of the floor slabs (excluding plaster) of each residential property (mm) 每個住宅物業的樓板 (不包括灰泥) 的厚度 (毫米)	Tower 2 (T2-A) 第2座 (T2-A)	2/F-3/F, 5/F-12/F, 15/F-21/F	150, 200	150, 175	150, 200	150, 200	150, 175	
The floor-to-floor height (refers to the height between the top surface of the structural slab of a floor and the top surface of the structural slab of its immediate upper floor) of each residential property (mm) 每個住宅物業的層與層之間的高度 (指該樓層之石屎地台面與上一層石屎地台面之高度距離) (毫米)			3150, 3200*, 3400*, 3450*, 3500*	3150, 3200*, 3400*, 3450*, 3500*	3150, 3200*, 3400*, 3450*, 3500*	3150, 3200*, 3400*, 3450*	3150, 3200*, 3450*, 3500*	
The thickness of the floor slabs (excluding plaster) of each residential property (mm) 每個住宅物業的樓板 (不包括灰泥) 的厚度 (毫米)	Tower 2 (T2-B) 第2座 (T2-B)	2樓至3樓, 5樓至12樓, 15樓至21樓	150, 175*, 225*	150, 175*	150	150	150	150
The floor-to-floor height (refers to the height between the top surface of the structural slab of a floor and the top surface of the structural slab of its immediate upper floor) of each residential property (mm) 每個住宅物業的層與層之間的高度 (指該樓層之石屎地台面與上一層石屎地台面之高度距離) (毫米)			3150, 3200*, 3400*, 3450*	3150, 3175*, 3200*, 3450*, 3500*	3150, 3500*	3150, 3500*	3150, 3500*	3150, 3400*

* 21/F only 只限21樓

The internal areas of the residential properties on the upper floors will generally be slightly larger than those on the lower floors because of the reducing thickness of the structural walls on the upper floors.

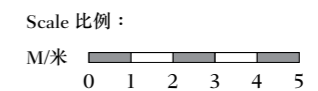
Notes:

1. The dimensions in the floor plans are all structural dimensions in millimetre.
2. 4/F, 13/F, 14/F, 24/F, 34/F, 44/F and 54/F are omitted.
3. 22/F and 51/F are refuge floors.

因住宅物業的較高樓層的結構牆的厚度遞減，較高樓層的內部面積，一般比較低樓層的內部面積稍大。
備註：

1. 樓面平面圖所列之尺寸為以毫米標示之建築結構尺寸。
2. 不設4樓、13樓、14樓、24樓、34樓、44樓及54樓。
3. 22樓及51樓為庇護層。

TOWER 2 (T2-A & T2-B) 2/F-3/F, 5/F-12/F, 15/F-21/F FLOOR PLAN
 第 2 座 (T2-A 及 T2-B) 2樓至3樓, 5樓至12樓, 15樓至21樓樓面平面圖



11 FLOOR PLANS OF RESIDENTIAL PROPERTIES IN THE PHASE

期數的住宅物業的樓面平面圖

	Tower 座數	Floor 樓層	Units 單位					
			A	B	C	D	E	F
The thickness of the floor slabs (excluding plaster) of each residential property (mm) 每個住宅物業的樓板 (不包括灰泥) 的厚度 (毫米)	Tower 2 (T2-A) 第2座 (T2-A)	23/F, 25/F-33/F 23樓, 25樓至33樓	150, 200	150, 175	150, 200	150, 200	150, 175	
The floor-to-floor height (refers to the height between the top surface of the structural slab of a floor and the top surface of the structural slab of its immediate upper floor) of each residential property (mm) 每個住宅物業的層與層之間的高度 (指該樓層之石屎地台面與上一層石屎地台面之高度距離) (毫米)			3150	3150	3150	3150	3150	
The thickness of the floor slabs (excluding plaster) of each residential property (mm) 每個住宅物業的樓板 (不包括灰泥) 的厚度 (毫米)	Tower 2 (T2-B) 第2座 (T2-B)	23樓, 25樓至33樓	150	150	150	150	150	150
The floor-to-floor height (refers to the height between the top surface of the structural slab of a floor and the top surface of the structural slab of its immediate upper floor) of each residential property (mm) 每個住宅物業的層與層之間的高度 (指該樓層之石屎地台面與上一層石屎地台面之高度距離) (毫米)			3150	3150	3150	3150	3150	3150

The internal areas of the residential properties on the upper floors will generally be slightly larger than those on the lower floors because of the reducing thickness of the structural walls on the upper floors.

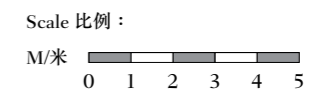
Notes:

- The dimensions in the floor plans are all structural dimensions in millimetre.
- 4/F, 13/F, 14/F, 24/F, 34/F, 44/F and 54/F are omitted.
- 22/F and 51/F are refuge floors.

因住宅物業的較高樓層的結構牆的厚度遞減，較高樓層的內部面積，一般比較低樓層的內部面積稍大。
備註：

- 樓面平面圖所列之尺寸為以毫米標示之建築結構尺寸。
- 不設4樓、13樓、14樓、24樓、34樓、44樓及54樓。
- 22樓及51樓為庇護層。

TOWER 2 (T2-A & T2-B) 23/F, 25/F-33/F FLOOR PLAN
 第2座 (T2-A及T2-B) 23樓, 25樓至33樓樓面平面圖



11 FLOOR PLANS OF RESIDENTIAL PROPERTIES IN THE PHASE

期數的住宅物業的樓面平面圖

	Tower 座數	Floor 樓層	Units 單位					
			A	B	C	D	E	F
The thickness of the floor slabs (excluding plaster) of each residential property (mm) 每個住宅物業的樓板 (不包括灰泥) 的厚度 (毫米)	Tower 2 (T2-A) 第2座 (T2-A)	35/F-42/F 35樓至42樓	150, 200	150, 175	150, 200	150, 200	150, 175	
The floor-to-floor height (refers to the height between the top surface of the structural slab of a floor and the top surface of the structural slab of its immediate upper floor) of each residential property (mm) 每個住宅物業的層與層之間的高度 (指該樓層之石屎地台面與上一層石屎地台面之高度距離) (毫米)			3500	3500	3500	3500	3500	
The thickness of the floor slabs (excluding plaster) of each residential property (mm) 每個住宅物業的樓板 (不包括灰泥) 的厚度 (毫米)	Tower 2 (T2-B) 第2座 (T2-B)		150	150	150	150	150	150
The floor-to-floor height (refers to the height between the top surface of the structural slab of a floor and the top surface of the structural slab of its immediate upper floor) of each residential property (mm) 每個住宅物業的層與層之間的高度 (指該樓層之石屎地台面與上一層石屎地台面之高度距離) (毫米)			3500	3500	3500	3500	3500	3500

The internal areas of the residential properties on the upper floors will generally be slightly larger than those on the lower floors because of the reducing thickness of the structural walls on the upper floors.

Notes:

1. The dimensions in the floor plans are all structural dimensions in millimetre.
2. 4/F, 13/F, 14/F, 24/F, 34/F, 44/F and 54/F are omitted.
3. 22/F and 51/F are refuge floors.

因住宅物業的較高樓層的結構牆的厚度遞減，較高樓層的內部面積，一般比較低樓層的內部面積稍大。
備註：

1. 樓面平面圖所列之尺寸為以毫米標示之建築結構尺寸。
2. 不設4樓、13樓、14樓、24樓、34樓、44樓及54樓。
3. 22樓及51樓為庇護層。

TOWER 2 (T2-A & T2-B) 35/F-42/F FLOOR PLAN
 第2座 (T2-A及T2-B) 35樓至42樓樓面平面圖



Scale 比例:
 M/米 0 1 2 3 4 5



11 FLOOR PLANS OF RESIDENTIAL PROPERTIES IN THE PHASE 期數的住宅物業的樓面平面圖

	Tower 座數	Floor 樓層	Units 單位					
			A	B	C	D	E	F
The thickness of the floor slabs (excluding plaster) of each residential property (mm) 每個住宅物業的樓板 (不包括灰泥) 的厚度 (毫米)	Tower 2 (T2-A) 第2座 (T2-A)	43/F, 45/F-50/F	150, 200	150, 175	150, 175*, 200	150, 200	150, 175	
The floor-to-floor height (refers to the height between the top surface of the structural slab of a floor and the top surface of the structural slab of its immediate upper floor) of each residential property (mm) 每個住宅物業的層與層之間的高度 (指該樓層之石屎地台面與上一層石屎地台面之高度距離) (毫米)			3500, 3550*, 3750*, 3800*, 3850*	3500, 3550*, 3750*, 3800*, 3850*	3500, 3550*, 3750*, 3800*, 3850*	3500, 3550*, 3750*, 3800*	3500, 3550*, 3800*, 3850*	
The thickness of the floor slabs (excluding plaster) of each residential property (mm) 每個住宅物業的樓板 (不包括灰泥) 的厚度 (毫米)	Tower 2 (T2-B) 第2座 (T2-B)	43樓, 45樓至50樓	150, 175*	150, 175*	150	150, 175*	150, 175*	150, 175*
The floor-to-floor height (refers to the height between the top surface of the structural slab of a floor and the top surface of the structural slab of its immediate upper floor) of each residential property (mm) 每個住宅物業的層與層之間的高度 (指該樓層之石屎地台面與上一層石屎地台面之高度距離) (毫米)			3500, 3550*, 3750*, 3800*	3500, 3550*, 3800*, 3850*	3500, 3850*	3500, 3850*	3500, 3850*	3500, 3750*

* 50/F only 只限50樓

The internal areas of the residential properties on the upper floors will generally be slightly larger than those on the lower floors because of the reducing thickness of the structural walls on the upper floors.

Notes:

- The dimensions in the floor plans are all structural dimensions in millimetre.
- 4/F, 13/F, 14/F, 24/F, 34/F, 44/F and 54/F are omitted.
- 22/F and 51/F are refuge floors.

因住宅物業的較高樓層的結構牆的厚度遞減，較高樓層的內部面積，一般比較低樓層的內部面積稍大。
備註：

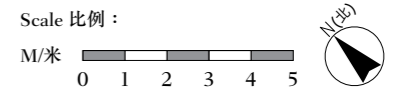
- 樓面平面圖所列之尺寸為以毫米標示之建築結構尺寸。
- 不設4樓、13樓、14樓、24樓、34樓、44樓及54樓。
- 22樓及51樓為庇護層。

TOWER 2 (T2-A & T2-B) 43/F, 45/F-50/F FLOOR PLAN
 第2座 (T2-A及T2-B) 43樓, 45樓至50樓樓面平面圖



T2-B

T2-A



11 FLOOR PLANS OF RESIDENTIAL PROPERTIES IN THE PHASE

期數的住宅物業的樓面平面圖

	Tower 座數	Floor 樓層	Units 單位		
			A	B	
The thickness of the floor slabs (excluding plaster) of each residential property (mm) 每個住宅物業的樓板 (不包括灰泥) 的厚度 (毫米)	Tower 2 (T2-A) 第2座 (T2-A)	52/F 52樓	150, 175, 200		150, 175, 200
The floor-to-floor height (refers to the height between the top surface of the structural slab of a floor and the top surface of the structural slab of its immediate upper floor) of each residential property (mm) 每個住宅物業的層與層之間的高度 (指該樓層之石屎地台面與上一層石屎地台面之高度距離) (毫米)			3050, 3125, 3150, 3200, 3450, 3500, 3550, 3725, 3950, 4050, 4100		3100, 3150, 3200, 3450, 3500, 3550, 3800, 3900, 3950
The thickness of the floor slabs (excluding plaster) of each residential property (mm) 每個住宅物業的樓板 (不包括灰泥) 的厚度 (毫米)	Tower 2 (T2-B) 第2座 (T2-B)		A	B	C
The floor-to-floor height (refers to the height between the top surface of the structural slab of a floor and the top surface of the structural slab of its immediate upper floor) of each residential property (mm) 每個住宅物業的層與層之間的高度 (指該樓層之石屎地台面與上一層石屎地台面之高度距離) (毫米)			150, 175	150, 200	150, 175, 200
		3100, 3500, 3850	3000, 3100, 3150, 3500, 3850, 3900, 4000	3100, 3150, 3500, 3850, 3900	

The internal areas of the residential properties on the upper floors will generally be slightly larger than those on the lower floors because of the reducing thickness of the structural walls on the upper floors.

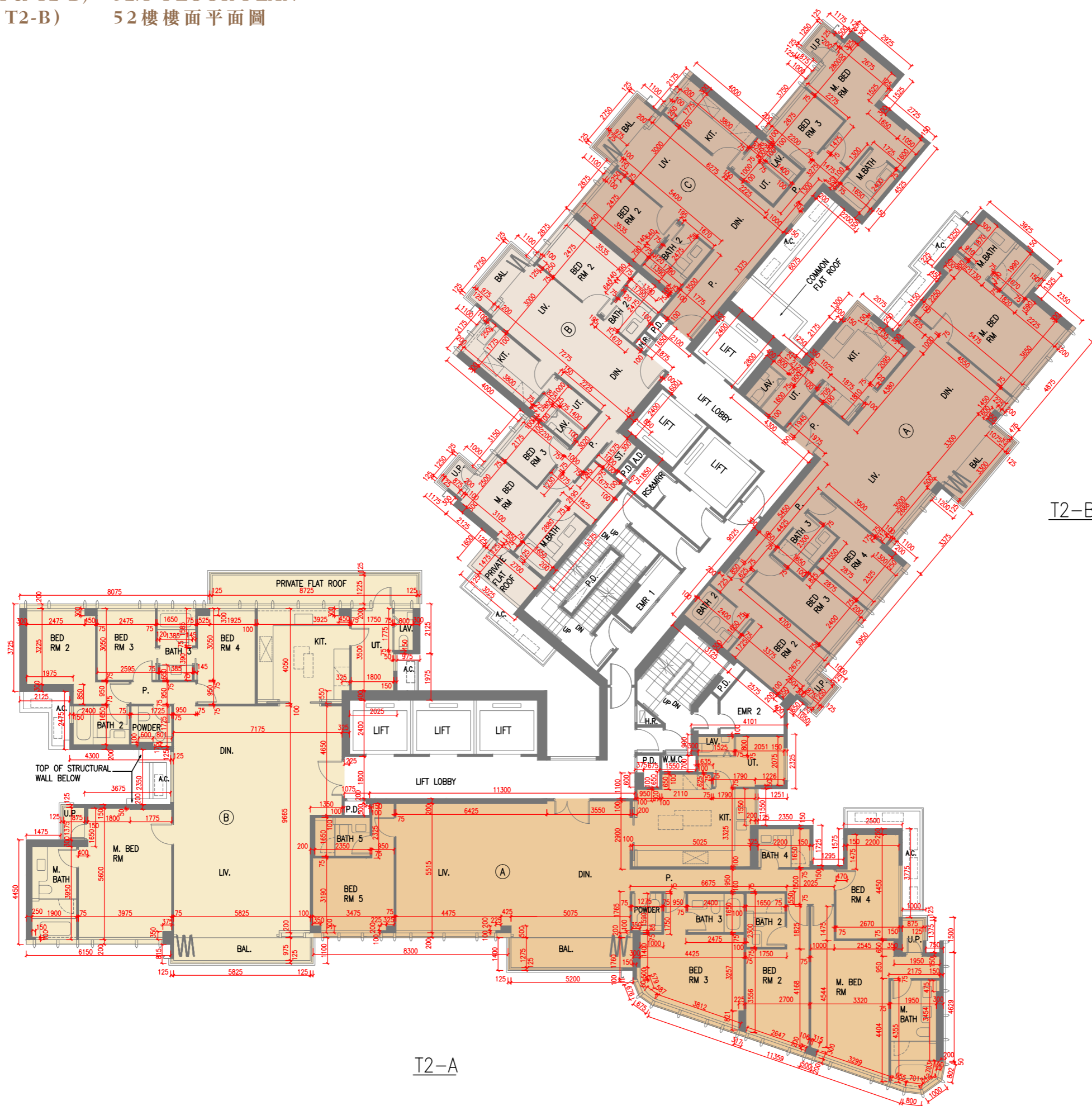
Notes:

- The dimensions in the floor plans are all structural dimensions in millimetre.
- 4/F, 13/F, 14/F, 24/F, 34/F, 44/F and 54/F are omitted.
- 22/F and 51/F are refuge floors.

因住宅物業的較高樓層的結構牆的厚度遞減，較高樓層的內部面積，一般比較低樓層的內部面積稍大。
備註：

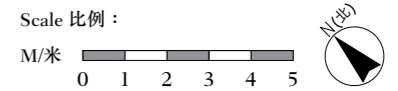
- 樓面平面圖所列之尺寸為以毫米標示之建築結構尺寸。
- 不設4樓、13樓、14樓、24樓、34樓、44樓及54樓。
- 22樓及51樓為庇護層。

TOWER 2 (T2-A & T2-B) 52/F FLOOR PLAN
 第 2 座 (T2-A 及 T2-B) 52 樓樓面平面圖



T2-A

T2-B



11 FLOOR PLANS OF RESIDENTIAL PROPERTIES IN THE PHASE 期數的住宅物業的樓面平面圖

	Tower 座數	Floor 樓層	Units 單位		
			A	B	
The thickness of the floor slabs (excluding plaster) of each residential property (mm) 每個住宅物業的樓板 (不包括灰泥) 的厚度 (毫米)	Tower 2 (T2-A) 第2座 (T2-A)	53/F, 55/F-57/F 53樓, 55樓至57樓	150, 175, 200		150, 175, 200
The floor-to-floor height (refers to the height between the top surface of the structural slab of a floor and the top surface of the structural slab of its immediate upper floor) of each residential property (mm) 每個住宅物業的層與層之間的高度 (指該樓層之石屎地台面與上一層石屎地台面之高度距離) (毫米)			2950*, 3000*, 3050*, 3100*, 3150*, 3300*, 3400*, 3450*, 3475*, 3500, 3525*, 3550*, 3600*, 3800*, 3850*, 3875*, 3950*, 4050*		3000*, 3050*, 3100*, 3150*, 3450*, 3500, 3550*, 3800*, 3950*
The thickness of the floor slabs (excluding plaster) of each residential property (mm) 每個住宅物業的樓板 (不包括灰泥) 的厚度 (毫米)	Tower 2 (T2-B) 第2座 (T2-B)		A	B	C
The floor-to-floor height (refers to the height between the top surface of the structural slab of a floor and the top surface of the structural slab of its immediate upper floor) of each residential property (mm) 每個住宅物業的層與層之間的高度 (指該樓層之石屎地台面與上一層石屎地台面之高度距離) (毫米)			150, 175, 200*	150, 175*, 200#	150, 175, 200#
			3000*, 3050*, 3100*, 3150*, 3200*, 3250*, 3350*, 3400*, 3450*, 3500*, 3550*, 3750*, 3850*, 3900*, 3950*	2950*, 3000*, 3050*, 3100*, 3150*, 3200*, 3450*, 3500, 3550*, 3850*, 3900*, 3950*, 4000*	3150*, 3200*, 3500, 3550*, 3650*, 3850*, 3900*, 3950*, 4000*

53/F, 55/F-56/F only 只限53樓、55樓至56樓

* 57/F only 只限57樓

The internal areas of the residential properties on the upper floors will generally be slightly larger than those on the lower floors because of the reducing thickness of the structural walls on the upper floors.

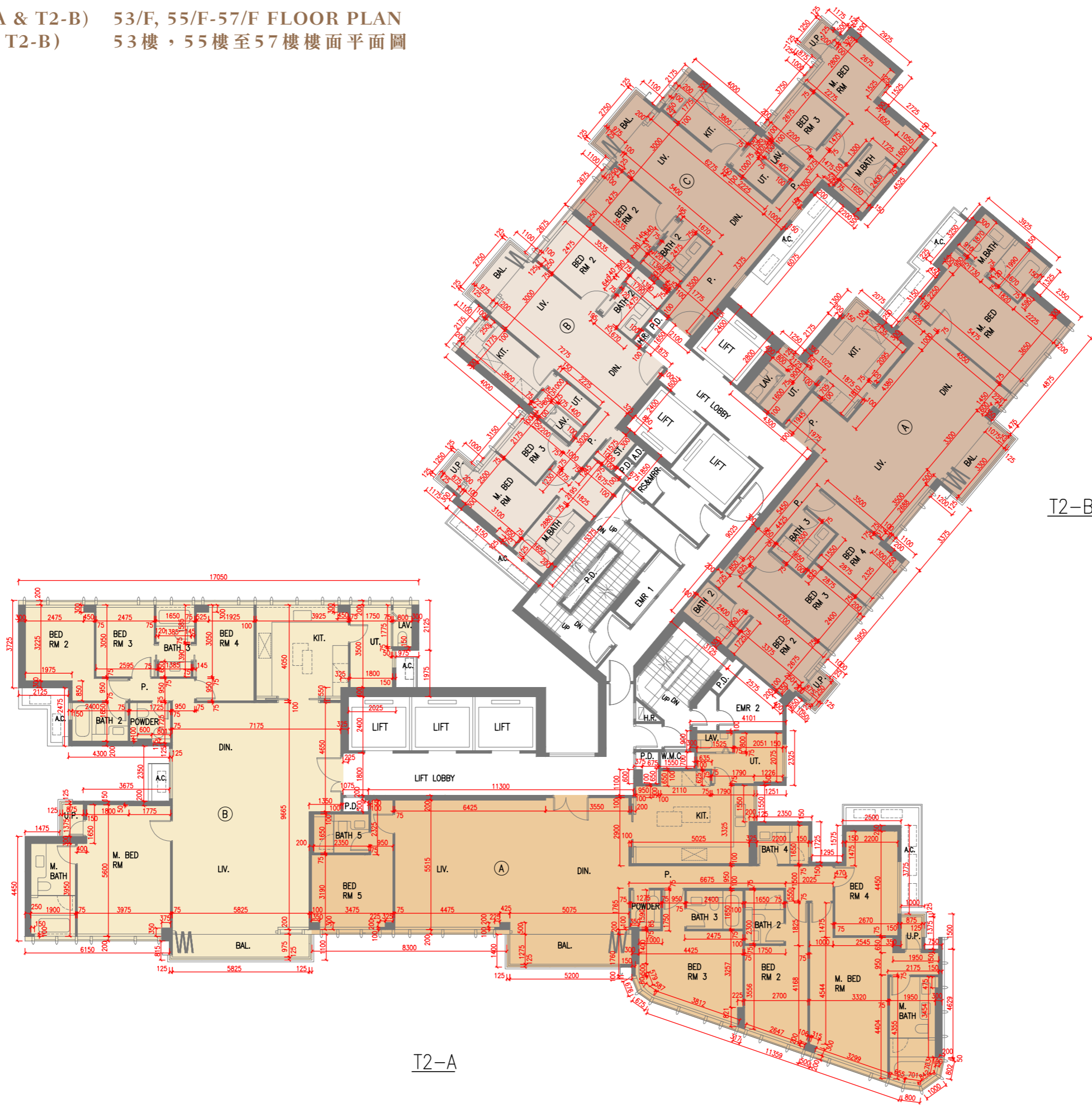
Notes:

1. The dimensions in the floor plans are all structural dimensions in millimetre.
2. 4/F, 13/F, 14/F, 24/F, 34/F, 44/F and 54/F are omitted.
3. 22/F and 51/F are refuge floors.

因住宅物業的較高樓層的結構牆的厚度遞減，較高樓層的內部面積，一般比較低樓層的內部面積稍大。
備註：

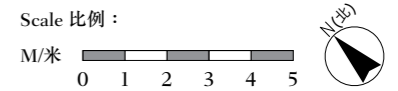
1. 樓面平面圖所列之尺寸為以毫米標示之建築結構尺寸。
2. 不設4樓、13樓、14樓、24樓、34樓、44樓及54樓。
3. 22樓及51樓為庇護層。

TOWER 2 (T2-A & T2-B) 53/F, 55/F-57/F FLOOR PLAN
 第2座 (T2-A及T2-B) 53樓, 55樓至57樓樓面平面圖



T2-A

T2-B



11 FLOOR PLANS OF RESIDENTIAL PROPERTIES IN THE PHASE

期數的住宅物業的樓面平面圖

	Tower 座數	Floor 樓層	Units 單位		
			A	B	
The thickness of the floor slabs (excluding plaster) of each residential property (mm) 每個住宅物業的樓板 (不包括灰泥) 的厚度 (毫米)	Tower 2 (T2-A) 第2座 (T2-A)	58/F 58樓	150, 200, 250, 500		150, 175, 200, 250
The floor-to-floor height (refers to the height between the top surface of the structural slab of a floor and the top surface of the structural slab of its immediate upper floor) of each residential property (mm) 每個住宅物業的層與層之間的高度 (指該樓層之石屎地台面與上一層石屎地台面之高度距離) (毫米)			3150, 3450, 3500, 3550, 3600, 3650, 3850, 3900, 3950, 4000, 4050, 7000		3450, 3500, 3800, 3850, 3900, 3950, 4000
The thickness of the floor slabs (excluding plaster) of each residential property (mm) 每個住宅物業的樓板 (不包括灰泥) 的厚度 (毫米)	Tower 2 (T2-B) 第2座 (T2-B)		A	B	C
The floor-to-floor height (refers to the height between the top surface of the structural slab of a floor and the top surface of the structural slab of its immediate upper floor) of each residential property (mm) 每個住宅物業的層與層之間的高度 (指該樓層之石屎地台面與上一層石屎地台面之高度距離) (毫米)			150, 200	150,175	150, 175
		3200, 3400, 3450, 3500, 3550, 3600, 3850, 3900, 3950, 4000	3150, 3450, 3500, 3850, 3900, 3950, 4000, 4050	3150, 3450, 3500, 3800, 3850	

The internal areas of the residential properties on the upper floors will generally be slightly larger than those on the lower floors because of the reducing thickness of the structural walls on the upper floors.

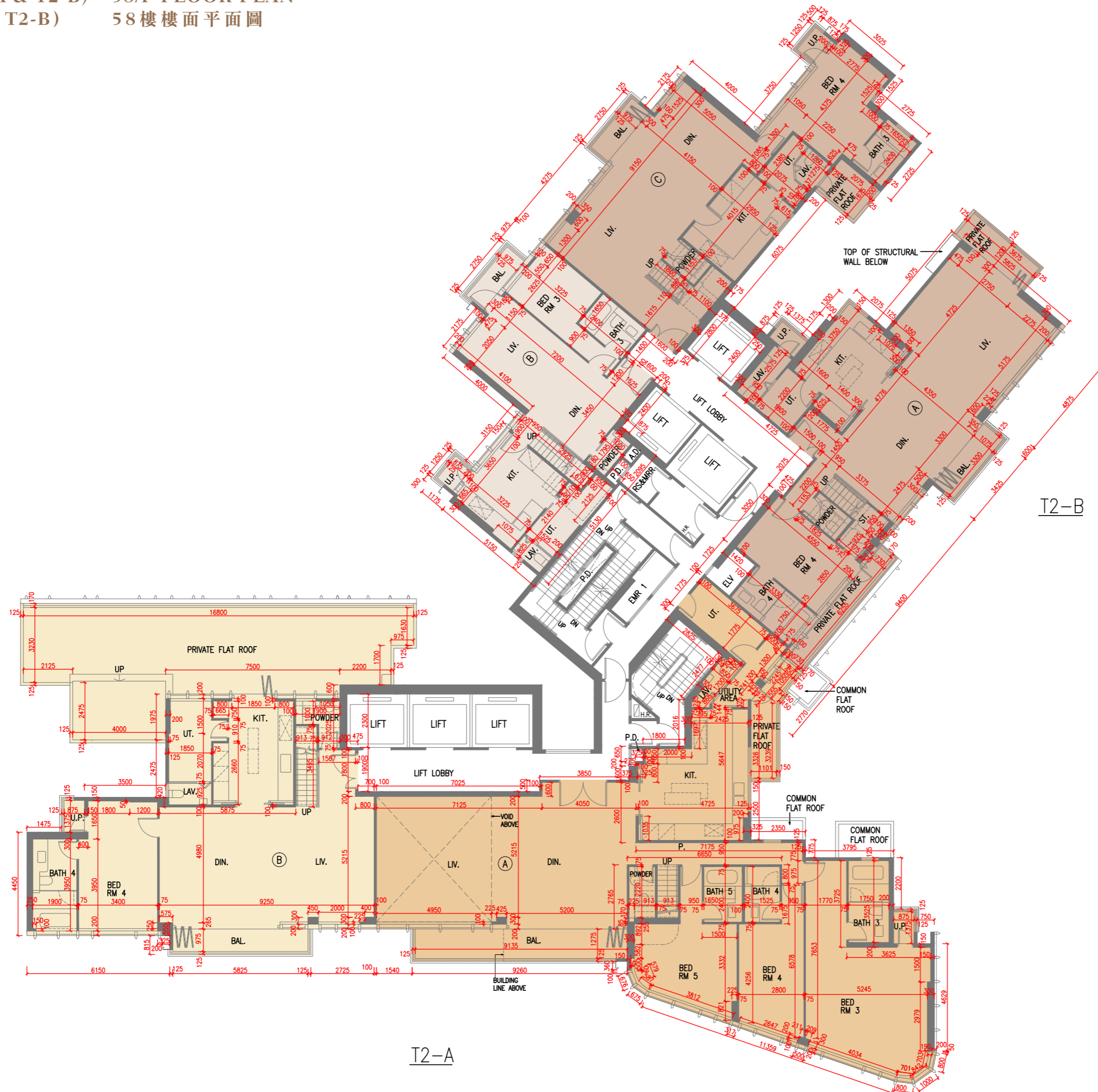
Notes:

- The dimensions in the floor plans are all structural dimensions in millimetre.
- 4/F, 13/F, 14/F, 24/F, 34/F, 44/F and 54/F are omitted.
- 22/F and 51/F are refuge floors.

因住宅物業的較高樓層的結構牆的厚度遞減，較高樓層的內部面積，一般比較低樓層的內部面積稍大。
備註：

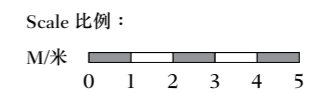
- 樓面平面圖所列之尺寸為以毫米標示之建築結構尺寸。
- 不設4樓、13樓、14樓、24樓、34樓、44樓及54樓。
- 22樓及51樓為庇護層。

TOWER 2 (T2-A & T2-B) 58/F FLOOR PLAN
 第2座 (T2-A及T2-B) 58樓樓面平面圖



T2-A

T2-B



11 FLOOR PLANS OF RESIDENTIAL PROPERTIES IN THE PHASE 期數的住宅物業的樓面平面圖

	Tower 座數	Floor 樓層	Units 單位		
			A	B	
The thickness of the floor slabs (excluding plaster) of each residential property (mm) 每個住宅物業的樓板 (不包括灰泥) 的厚度 (毫米)	Tower 2 (T2-A) 第2座 (T2-A)	59/F 59樓	150, 200, 250		150, 200, 300
The floor-to-floor height (refers to the height between the top surface of the structural slab of a floor and the top surface of the structural slab of its immediate upper floor) of each residential property (mm) 每個住宅物業的層與層之間的高度 (指該樓層之石屎地台面與上一層石屎地台面之高度距離) (毫米)			3500, 3550		3250, 3500, 3550, 3700
The thickness of the floor slabs (excluding plaster) of each residential property (mm) 每個住宅物業的樓板 (不包括灰泥) 的厚度 (毫米)	Tower 2 (T2-B) 第2座 (T2-B)		A	B	C
The floor-to-floor height (refers to the height between the top surface of the structural slab of a floor and the top surface of the structural slab of its immediate upper floor) of each residential property (mm) 每個住宅物業的層與層之間的高度 (指該樓層之石屎地台面與上一層石屎地台面之高度距離) (毫米)			200, 225, 300	150, 200, 300	150, 200, 300
		3250, 3500, 3550	3250, 3300, 3500, 3550, 3850	3250, 3500, 3550	

The internal areas of the residential properties on the upper floors will generally be slightly larger than those on the lower floors because of the reducing thickness of the structural walls on the upper floors.

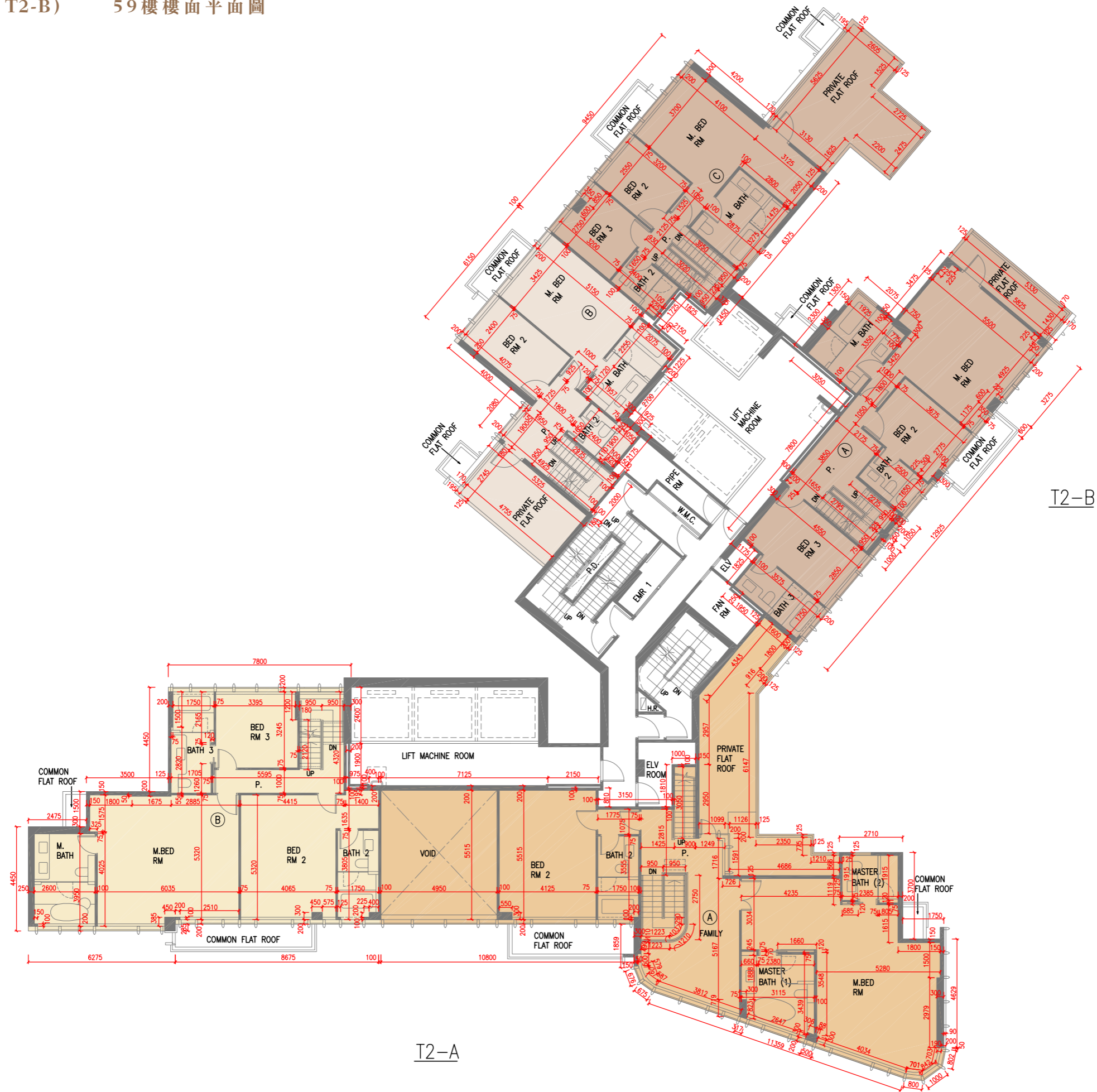
Notes:

- The dimensions in the floor plans are all structural dimensions in millimetre.
- 4/F, 13/F, 14/F, 24/F, 34/F, 44/F and 54/F are omitted.
- 22/F and 51/F are refuge floors.

因住宅物業的較高樓層的結構牆的厚度遞減，較高樓層的內部面積，一般比較低樓層的內部面積稍大。
備註：

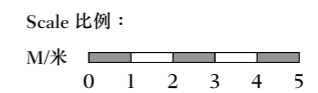
- 樓面平面圖所列之尺寸為以毫米標示之建築結構尺寸。
- 不設4樓、13樓、14樓、24樓、34樓、44樓及54樓。
- 22樓及51樓為庇護層。

TOWER 2 (T2-A & T2-B) 59/F FLOOR PLAN
 第2座 (T2-A及T2-B) 59樓樓面平面圖



T2-A

T2-B



11 FLOOR PLANS OF RESIDENTIAL PROPERTIES IN THE PHASE 期數的住宅物業的樓面平面圖

	Tower 座數	Floor 樓層	Units 單位		
			A	B	
The thickness of the floor slabs (excluding plaster) of each residential property (mm) 每個住宅物業的樓板 (不包括灰泥) 的厚度 (毫米)	Tower 2 (T2-A) 第2座 (T2-A)	Roof 天台	N/A 不適用	N/A 不適用	
The floor-to-floor height (refers to the height between the top surface of the structural slab of a floor and the top surface of the structural slab of its immediate upper floor) of each residential property (mm) 每個住宅物業的層與層之間的高度 (指該樓層之石屎地台面與上一層石屎地台面之高度距離) (毫米)			N/A 不適用	N/A 不適用	
The thickness of the floor slabs (excluding plaster) of each residential property (mm) 每個住宅物業的樓板 (不包括灰泥) 的厚度 (毫米)	Tower 2 (T2-B) 第2座 (T2-B)		A	B	C
The floor-to-floor height (refers to the height between the top surface of the structural slab of a floor and the top surface of the structural slab of its immediate upper floor) of each residential property (mm) 每個住宅物業的層與層之間的高度 (指該樓層之石屎地台面與上一層石屎地台面之高度距離) (毫米)			N/A 不適用	N/A 不適用	N/A 不適用
			N/A 不適用	N/A 不適用	N/A 不適用

The internal areas of the residential properties on the upper floors will generally be slightly larger than those on the lower floors because of the reducing thickness of the structural walls on the upper floors.

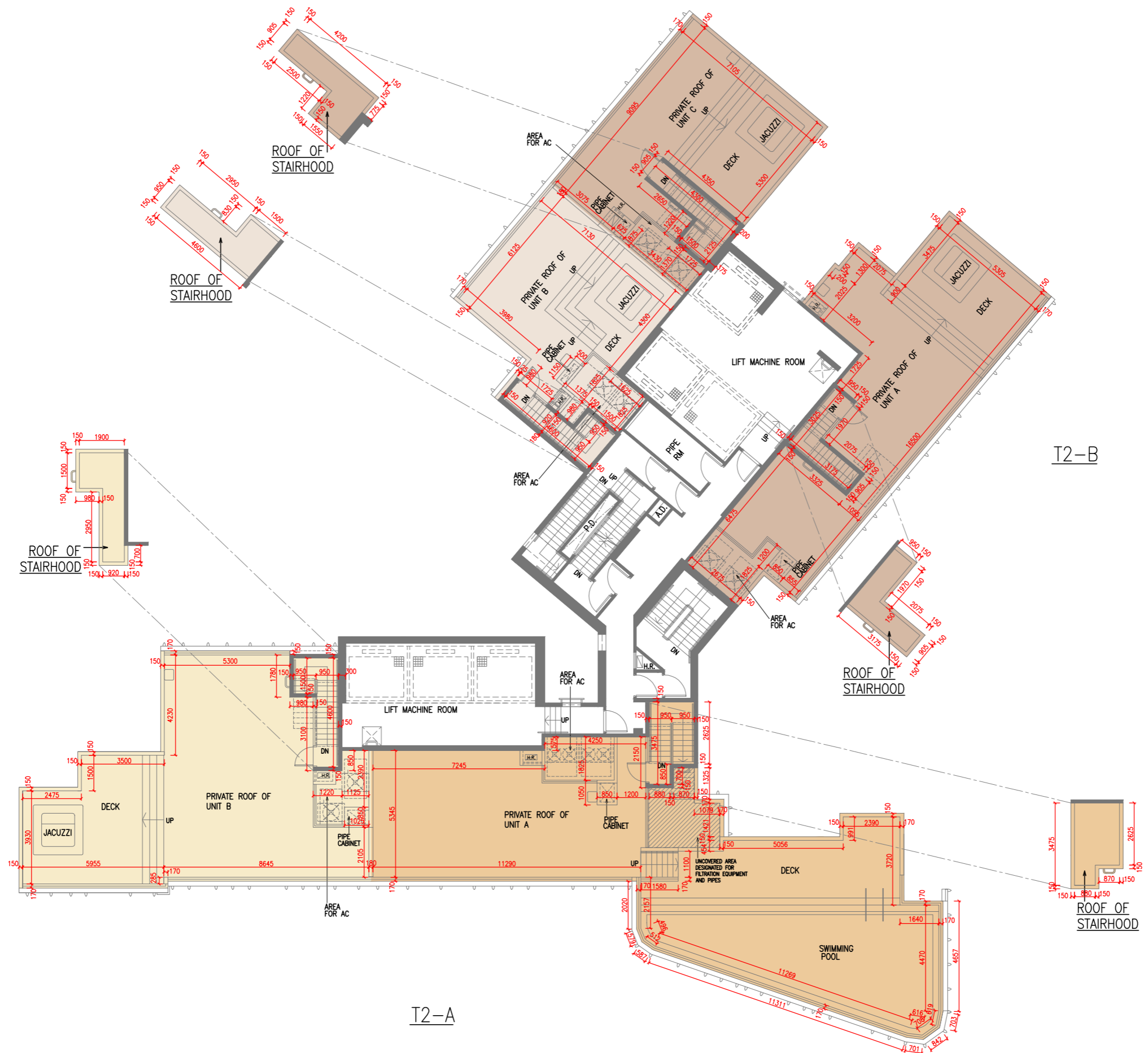
Notes:

- The dimensions in the floor plans are all structural dimensions in millimetre.
- 4/F, 13/F, 14/F, 24/F, 34/F, 44/F and 54/F are omitted.
- 22/F and 51/F are refuge floors.

因住宅物業的較高樓層的結構牆的厚度遞減，較高樓層的內部面積，一般比較低樓層的內部面積稍大。
備註：

- 樓面平面圖所列之尺寸為以毫米標示之建築結構尺寸。
- 不設4樓、13樓、14樓、24樓、34樓、44樓及54樓。
- 22樓及51樓為庇護層。

TOWER 2 (T2-A & T2-B) ROOF FLOOR PLAN
 第 2 座 (T2-A 及 T2-B) 天台樓面平面圖



T2-B

T2-A

