



# 1 FLOOR PLANS OF RESIDENTIAL PROPERTIES IN THE PHASE 1 期數的住宅物業的樓面平面圖

## Tower 5 (5A & 5B) 第5座 (5A及5B)

### 1/F FLOOR PLAN 1樓樓面平面圖



Remark: The dimensions of floor plans are all in millimetres.  
備註：樓面平面圖所列之尺寸為以毫米標示。

Scale 比例：



## Tower 5 (5A & 5B) 第5座 (5A及5B)

### 1/F FLOOR PLAN 1樓樓面平面圖

	Tower 座數	Floor 樓層	Flat 單位					
			A	B	C	D	E	F
The thickness of the floor slabs (excluding plaster) (mm) of each residential property 每個住宅物業的樓板(不包括灰泥)的厚度(毫米)	Tower 5 (5A) 第5座 (5A)	1/F 1樓	150			/	/	/
	Tower 5 (5B) 第5座 (5B)		150					
The floor-to-floor height (mm) of each residential property 每個住宅物業的層與層之間的高度(毫米)	Tower 5 (5A) 第5座 (5A)		3195, 3225			/	/	/
	Tower 5 (5B) 第5座 (5B)		3195, 3225					

The internal areas of the residential properties on the upper floors will generally be slightly larger than those on the lower floors because of the reducing thickness of the structural walls on the upper floors.

Notes:

1. The internal ceiling height within residential properties may vary due to structural, architectural and/or decoration design variations.
2. Please refer to page 24 of this sales brochure for legend of the terms and abbreviations in studying the floor plans.
3. For details of the noise mitigation measures, please refer to the Relevant Information section in this sales brochure.

因住宅物業的較高樓層的結構牆的厚度遞減，較高樓層的內部面積，一般比較低樓層的內部面積稍大。

備註：

1. 住宅物業之天花高度將會因應其結構、建築及/或裝修設計上的差異而有所不同。
2. 請參閱本售樓說明書第24頁之圖例以協助閱讀樓面平面圖之名稱和簡稱。
3. 有關噪音緩解措施之詳情，請參閱本售樓說明書的有關資料章節。

# 11 FLOOR PLANS OF RESIDENTIAL PROPERTIES IN THE PHASE 期數的住宅物業的樓面平面圖

## Tower 5 (5A & 5B) 第5座 (5A及5B)

2/F - 3/F, 5/F - 12/F, 15/F - 23/F  
& 25/F - 26/F FLOOR PLAN  
2樓至3樓、5樓至12樓、15樓至23樓  
及25樓至26樓樓面平面圖



Remark: The dimensions of floor plans are all in millimetres.  
備註：樓面平面圖所列之尺寸為以毫米標示。

Scale 比例：



## Tower 5 (5A & 5B) 第5座 (5A及5B)

2/F - 3/F, 5/F - 12/F, 15/F - 23/F  
& 25/F - 26/F FLOOR PLAN  
2樓至3樓、5樓至12樓、15樓至23樓  
及25樓至26樓樓面平面圖

	Tower 座數	Floor 樓層	Flat 單位					
			A	B	C	D	E	F
The thickness of the floor slabs (excluding plaster) (mm) of each residential property 每個住宅物業的樓板(不包括灰泥)的厚度(毫米)	Tower 5 (5A) 第5座 (5A)	2/F - 3/F, 5/F - 12/F, 15/F - 23/F & 25/F 2樓至3樓、5樓至12樓、 15樓至23樓及25樓	150			/	/	/
	Tower 5 (5B) 第5座 (5B)		150					
The floor-to-floor height (mm) of each residential property 每個住宅物業的層與層之間的高度(毫米)	Tower 5 (5A) 第5座 (5A)		3225			/	/	/
	Tower 5 (5B) 第5座 (5B)		3225					
The thickness of the floor slabs (excluding plaster) (mm) of each residential property 每個住宅物業的樓板(不包括灰泥)的厚度(毫米)	Tower 5 (5A) 第5座 (5A)		150			/	/	/
	Tower 5 (5B) 第5座 (5B)		150					
The floor-to-floor height (mm) of each residential property 每個住宅物業的層與層之間的高度(毫米)	Tower 5 (5A) 第5座 (5A)	26/F 26樓	3325, 3375, 3675	3325, 3375, 3675	2975, 3025, 3275, 3325, 3375, 3675	/	/	/
	Tower 5 (5B) 第5座 (5B)		3325					

The internal areas of the residential properties on the upper floors will generally be slightly larger than those on the lower floors because of the reducing thickness of the structural walls on the upper floors.

Notes:

1. The internal ceiling height within residential properties may vary due to structural, architectural and/or decoration design variations.
2. Please refer to page 24 of this sales brochure for legend of the terms and abbreviations in studying the floor plans.
3. For details of the noise mitigation measures, please refer to the Relevant Information section in this sales brochure.
4. 4/F, 13/F, 14/F and 24/F are omitted.

因住宅物業的較高樓層的結構牆的厚度遞減，較高樓層的內部面積，一般比較低樓層的內部面積稍大。

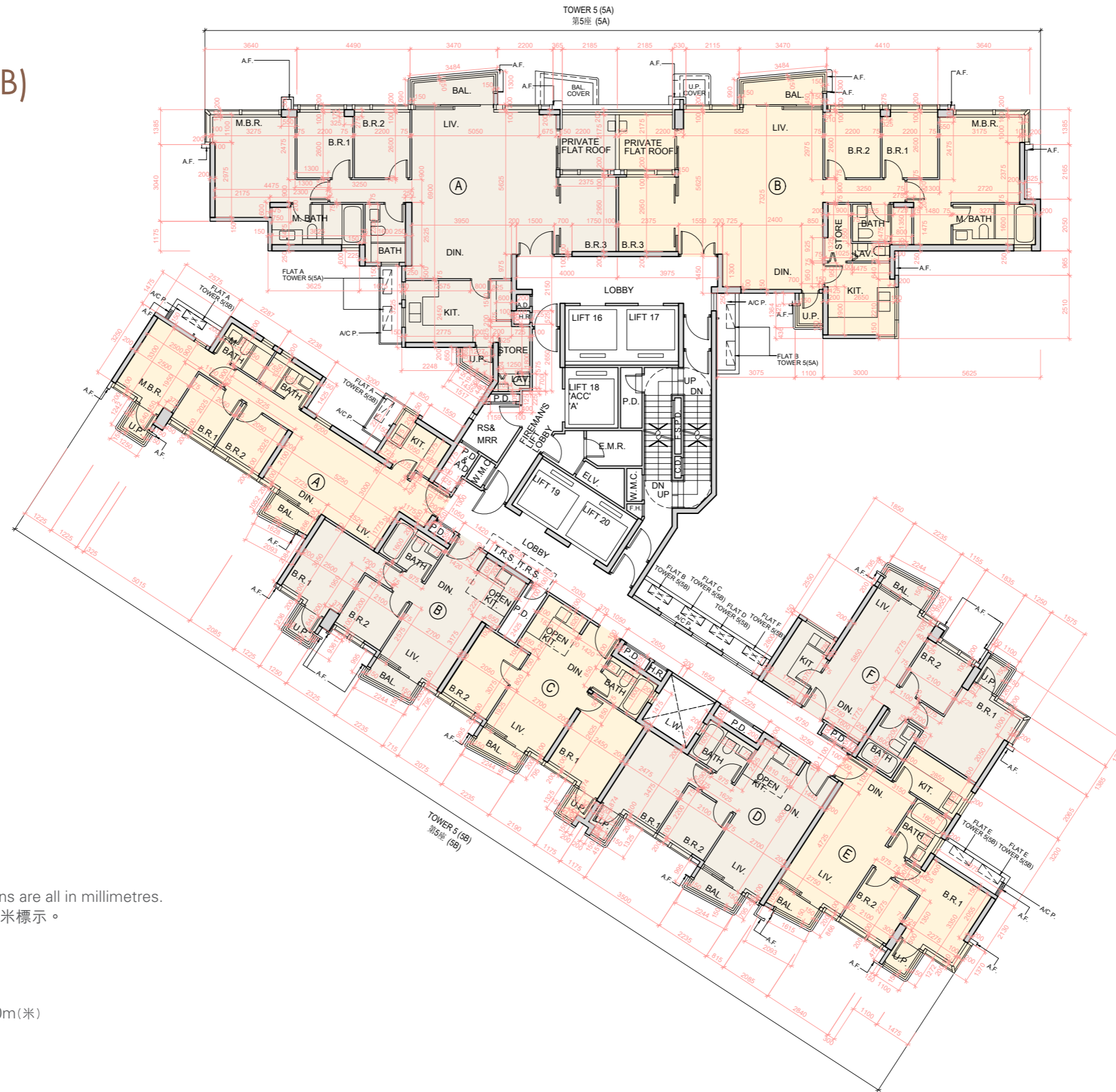
備註：

1. 住宅物業之天花高度將會因應其結構、建築及/或裝修設計上的差異而有所不同。
2. 請參閱本售樓說明書第24頁之圖例以協助閱讀樓面平面圖之名稱和簡稱。
3. 有關噪音緩解措施之詳情，請參閱本售樓說明書的有關資料章節。
4. 不設4樓、13樓、14樓及24樓。

# 1 | FLOOR PLANS OF RESIDENTIAL PROPERTIES IN THE PHASE 期數的住宅物業的樓面平面圖

## Tower 5 (5A & 5B) 第5座 (5A及5B)

### 27/F FLOOR PLAN 27樓樓面平面圖



Remark: The dimensions of floor plans are all in millimetres.  
備註：樓面平面圖所列之尺寸為以毫米標示。

Scale 比例：



## Tower 5 (5A & 5B) 第5座 (5A及5B)

### 27/F FLOOR PLAN 27樓樓面平面圖

	Tower 座數	Floor 樓層	Flat 單位					
			A	B	C	D	E	F
The thickness of the floor slabs (excluding plaster) (mm) of each residential property 每個住宅物業的樓板(不包括灰泥)的厚度(毫米)	Tower 5 (5A) 第5座 (5A)	27/F 27樓	150		/	/	/	/
	Tower 5 (5B) 第5座 (5B)		150					
The floor-to-floor height (mm) of each residential property 每個住宅物業的層與層之間的高度(毫米)	Tower 5 (5A) 第5座 (5A)		2975, 3275, 3325, 3375	2975, 3275, 3325	/	/	/	/
	Tower 5 (5B) 第5座 (5B)		3325					

The internal areas of the residential properties on the upper floors will generally be slightly larger than those on the lower floors because of the reducing thickness of the structural walls on the upper floors.

Notes:

1. The internal ceiling height within residential properties may vary due to structural, architectural and/or decoration design variations.
2. Please refer to page 24 of this sales brochure for legend of the terms and abbreviations in studying the floor plans.
3. For details of the noise mitigation measures, please refer to the Relevant Information section in this sales brochure.

因住宅物業的較高樓層的結構牆的厚度遞減，較高樓層的內部面積，一般比較低樓層的內部面積稍大。

備註：

1. 住宅物業之天花高度將會因應其結構、建築及/或裝修設計上的差異而有所不同。
2. 請參閱本售樓說明書第24頁之圖例以協助閱讀樓面平面圖之名稱和簡稱。
3. 有關噪音緩解措施之詳情，請參閱本售樓說明書的有關資料章節。

# 1 | FLOOR PLANS OF RESIDENTIAL PROPERTIES IN THE PHASE 期數的住宅物業的樓面平面圖

## Tower 5 (5A & 5B) 第5座 (5A及5B)

### 28/F FLOOR PLAN 28樓樓面平面圖



Remark: The dimensions of floor plans are all in millimetres.  
備註：樓面平面圖所列之尺寸為以毫米標示。

Scale 比例：





## Tower 5 (5A & 5B) 第5座 (5A及5B)

### 28/F FLOOR PLAN 28樓樓面平面圖

	Tower 座數	Floor 樓層	Flat 單位					
			A	B	C	D	E	F
The thickness of the floor slabs (excluding plaster) (mm) of each residential property 每個住宅物業的樓板(不包括灰泥)的厚度(毫米)	Tower 5 (5A) 第5座 (5A)	28/F 28樓	150, 200		/	/	/	/
	Tower 5 (5B) 第5座 (5B)		200					
The floor-to-floor height (mm) of each residential property 每個住宅物業的層與層之間的高度(毫米)	Tower 5 (5A) 第5座 (5A)		3500, 3550, 3850		/	/	/	/
	Tower 5 (5B) 第5座 (5B)		3500, 3550, 3850	3500, 3850				

The internal areas of the residential properties on the upper floors will generally be slightly larger than those on the lower floors because of the reducing thickness of the structural walls on the upper floors.

Notes:

1. The internal ceiling height within residential properties may vary due to structural, architectural and/or decoration design variations.
2. Please refer to page 24 of this sales brochure for legend of the terms and abbreviations in studying the floor plans.
3. For details of the noise mitigation measures, please refer to the Relevant Information section in this sales brochure.

因住宅物業的較高樓層的結構牆的厚度遞減，較高樓層的內部面積，一般比較低樓層的內部面積稍大。

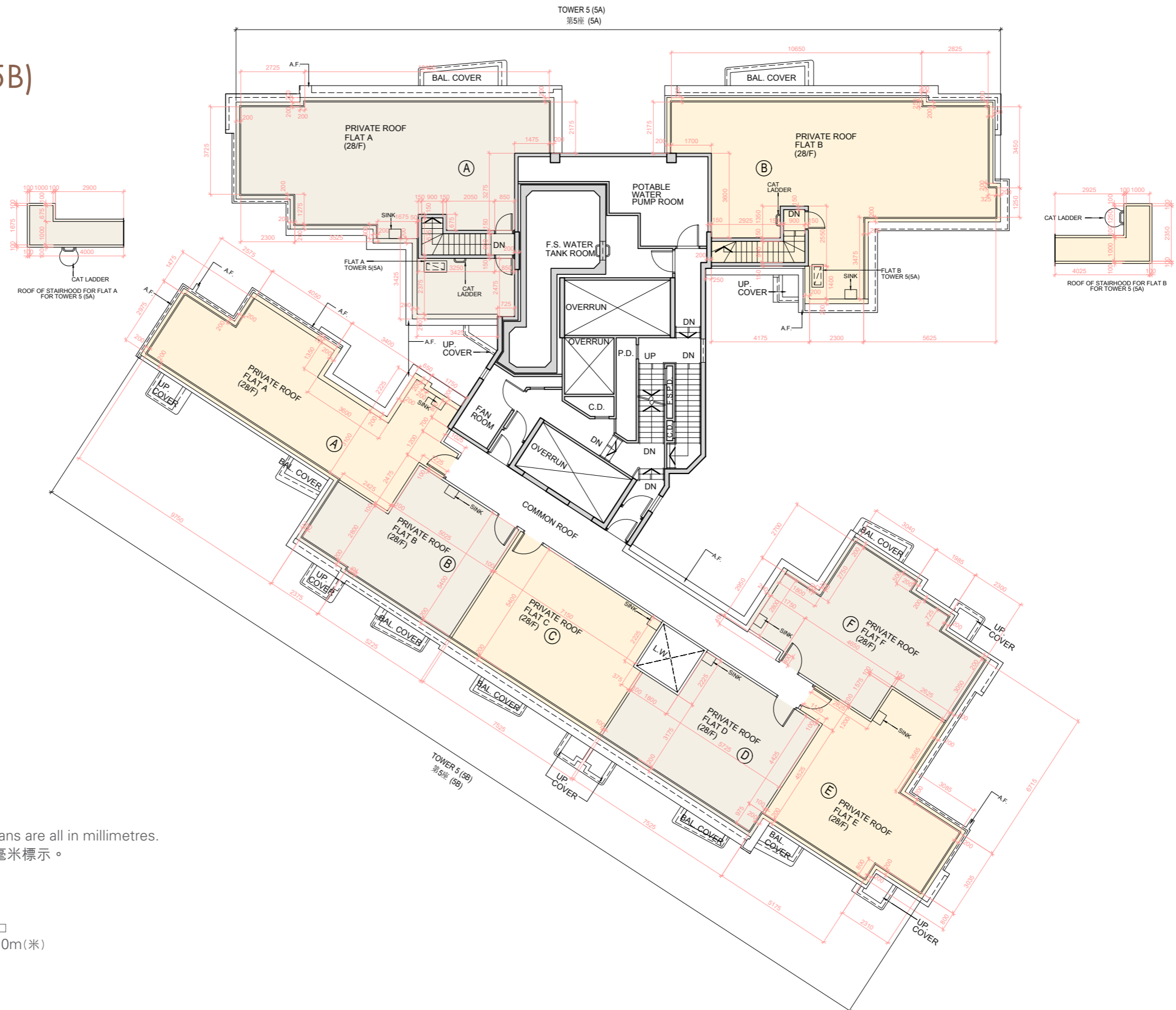
備註：

1. 住宅物業之天花高度將會因應其結構、建築及/或裝修設計上的差異而有所不同。
2. 請參閱本售樓說明書第24頁之圖例以協助閱讀樓面平面圖之名稱和簡稱。
3. 有關噪音緩解措施之詳情，請參閱本售樓說明書的有關資料章節。

# 11 FLOOR PLANS OF RESIDENTIAL PROPERTIES IN THE PHASE 期數的住宅物業的樓面平面圖

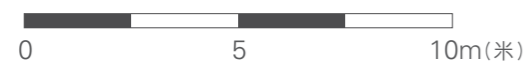
## Tower 5 (5A & 5B) 第5座 (5A及5B)

### ROOF FLOOR PLAN 天台樓面平面圖



Remark: The dimensions of floor plans are all in millimetres.  
備註：樓面平面圖所列之尺寸為以毫米標示。

Scale 比例：



## Tower 5 (5A & 5B) 第5座 (5A及5B)

### ROOF FLOOR PLAN 天台樓面平面圖

	Tower 座數	Floor 樓層	Flat 單位					
			A	B	C	D	E	F
The thickness of the floor slabs (excluding plaster) (mm) of each residential property 每個住宅物業的樓板(不包括灰泥)的厚度(毫米)	Tower 5 (5A) 第5座 (5A)	Roof 天台	150		/	/	/	/
	Tower 5 (5B) 第5座 (5B)		/					
The floor-to-floor height (mm) of each residential property 每個住宅物業的層與層之間的高度(毫米)	Tower 5 (5A) 第5座 (5A)		3000		/	/	/	/
	Tower 5 (5B) 第5座 (5B)		/					

The internal areas of the residential properties on the upper floors will generally be slightly larger than those on the lower floors because of the reducing thickness of the structural walls on the upper floors.

Notes:

1. The internal ceiling height within residential properties may vary due to structural, architectural and/or decoration design variations.
2. Please refer to page 24 of this sales brochure for legend of the terms and abbreviations in studying the floor plans.
3. For details of the noise mitigation measures, please refer to the Relevant Information section in this sales brochure.

因住宅物業的較高樓層的結構牆的厚度遞減，較高樓層的內部面積，一般比較低樓層的內部面積稍大。

備註：

1. 住宅物業之天花高度將會因應其結構、建築及/或裝修設計上的差異而有所不同。
2. 請參閱本售樓說明書第24頁之圖例以協助閱讀樓面平面圖之名稱和簡稱。
3. 有關噪音緩解措施之詳情，請參閱本售樓說明書的有關資料章節。